

水泵机组零部件图册

PART CATALOGUE

LC50ZB23-3.1Q(A)

LC80ZB20-3.1Q(A)

LC80WB20-4.5Q

LC50ZB60-4.5Q



版本号 **VERSION No.:** 2011-01

零件目录使用说明(Instruction for use of parts catalogue)

本零件目录是根据2011年1月所能得到的最新资料编制而成的。

This parts catalogue was prepared based on the latest information available as of August 2011.

请注意2011年1月以后本零部件目录的修订通知。

See the parts catalogue news for any revision that is made after August 2011.

当订购零件时，一定要明确指出其零件编号。

Always specify the part number when ordering a part.

注意本零件目录所给出的图形可能与实际零件外形有所不同。

Note that the illustrations can differ from the actual parts in shape.

当需要对零部件目录的内容进行更改或增加时，本公司将在适当的时间出版修订版，为保证在任何时候都可以使用到最新版本的零部件目录建议拥有最新的修订版本。如果要检查修订版本是否已经发行，请直接与LONCIN联系。

When modifications or additions to this parts catalogue are made, a revised edition will be issued at an appropriate time, We recommend obtaining such revisions in order to keep your parts catalogue up-to-date at all times. To check whether a parts catalogue revision has been issued, please contact your LONCIN distributor.

示例 (Example)

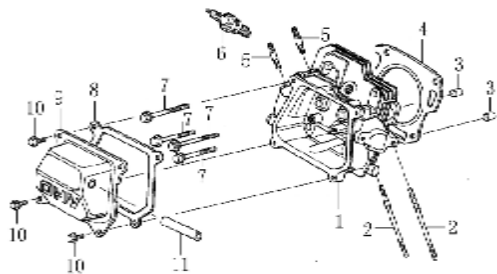
序号 No.	零部件图号 Part No.	零部件名称	Description	数量 (Reqd. QTY)		
				LC168F(D)-I		
10	103299-144	磁电机(飞轮)螺母	NUT, SPECIAL	1		
11	375100-144	转子部件(飞轮)	FLYWHEEL COMP	(1)		

LC168F(D)-I表示LC168F-I及LC168FD-I； [LC168F(D)-I means LC168F-I and LC168FD-I]

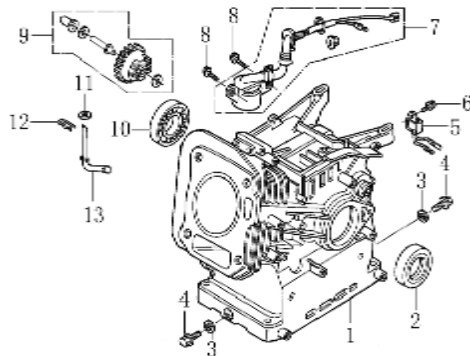
1 表示LC168F-I及LC168FD-I各1个； [1 means LC168F-I has 1 QTY and LC168FD-I has 1 QTY]

(1) 表示LC168F-I没有，LC168FD-I有1个。 [(1) means LC168F-I require 0 QTY and LC168FD-I require 1 QTY]

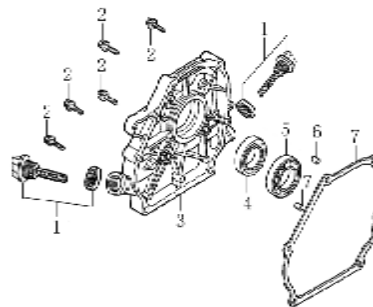
汽缸头(CYLINDER HEAD)



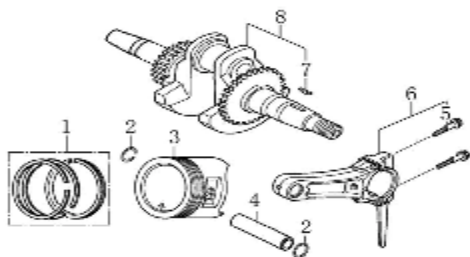
曲轴箱体(CRANK CASE)



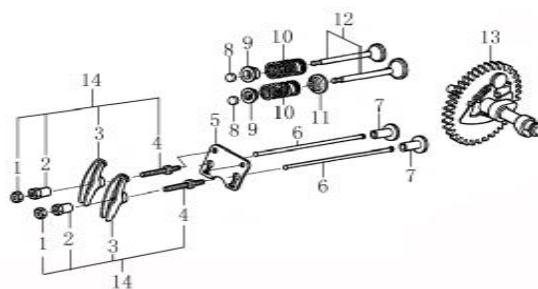
曲轴箱盖(CRANKCASE COVER)



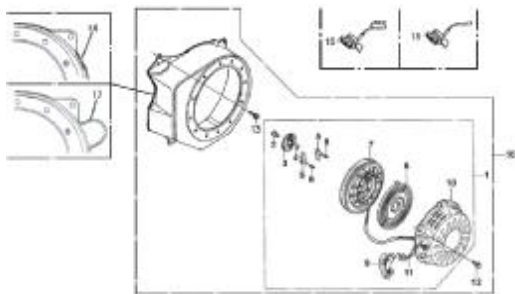
曲轴/活塞(CRANKSHAFT/PISTON)



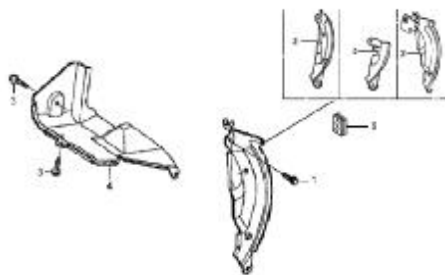
配气系统(GAS DISTRIBUTION ADJUSTMENT)



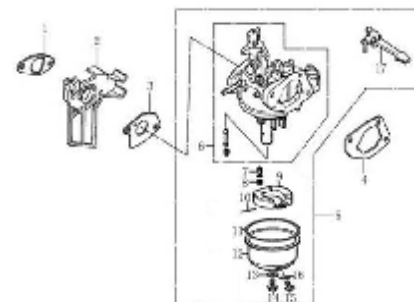
起动器组件(STARTER SUBASSEMBLY)



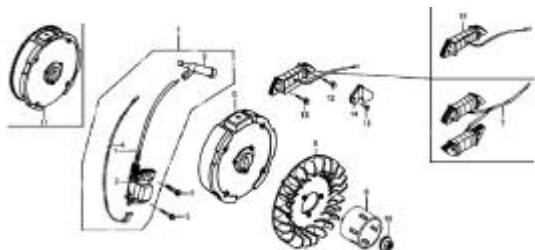
导风部件(DIVERSION ASSY.)



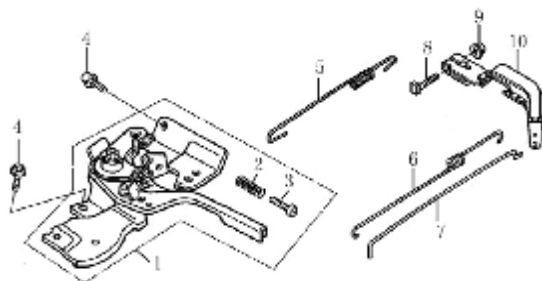
化油器(CARBURETOR)



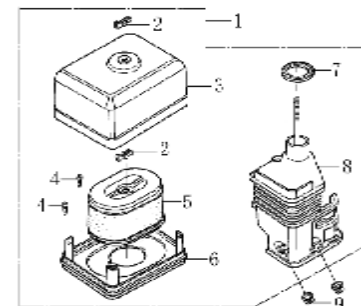
飞轮(FLYWHEEL)



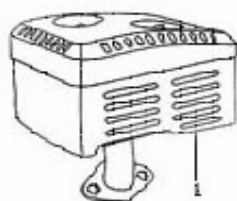
调速控制系统(CONTROL)



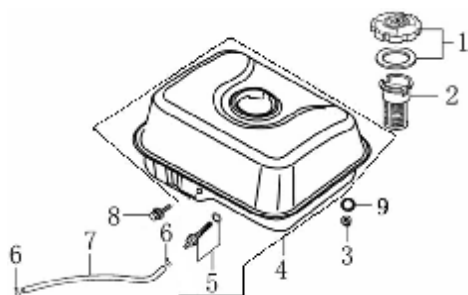
空气滤清器(AIR CLEANER)



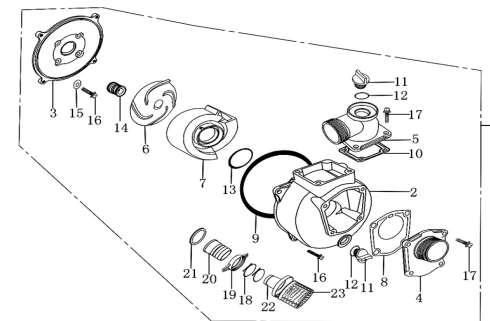
消声器(MUFFLER)



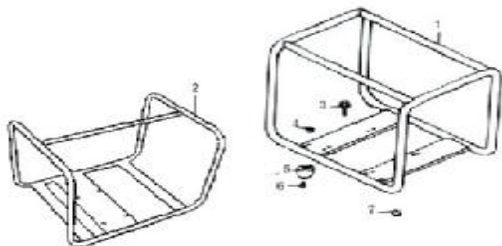
油箱(FUEL TANK)



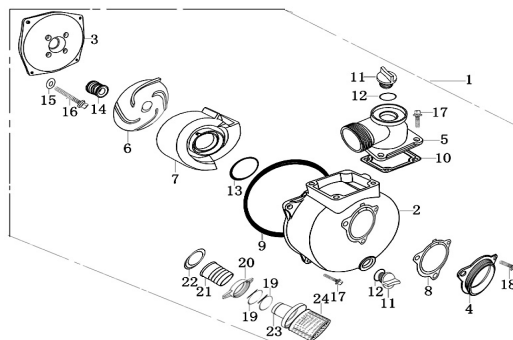
2寸水泵 (2" PUMP)



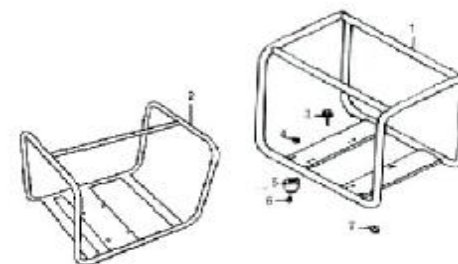
2寸水泵 (2" PUMP)



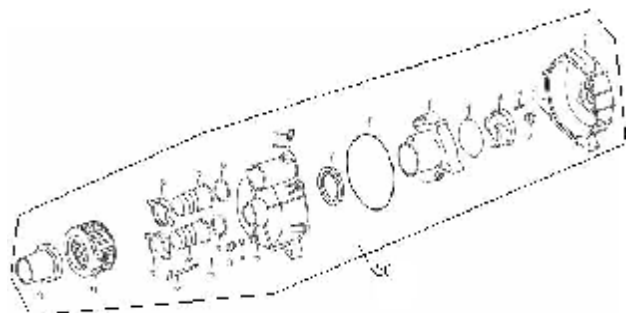
3寸水泵 (3" PUMP)



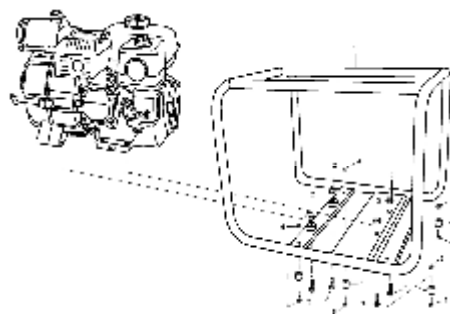
3寸水泵 (3" PUMP)



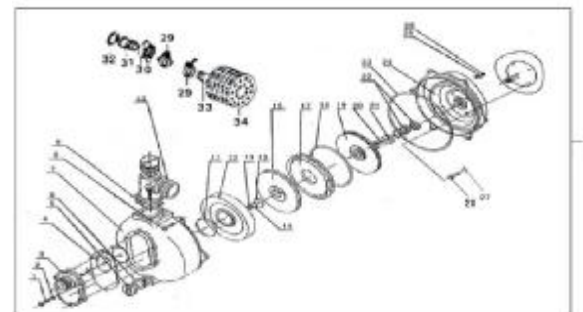
排污泵 (TRASH PUMP)

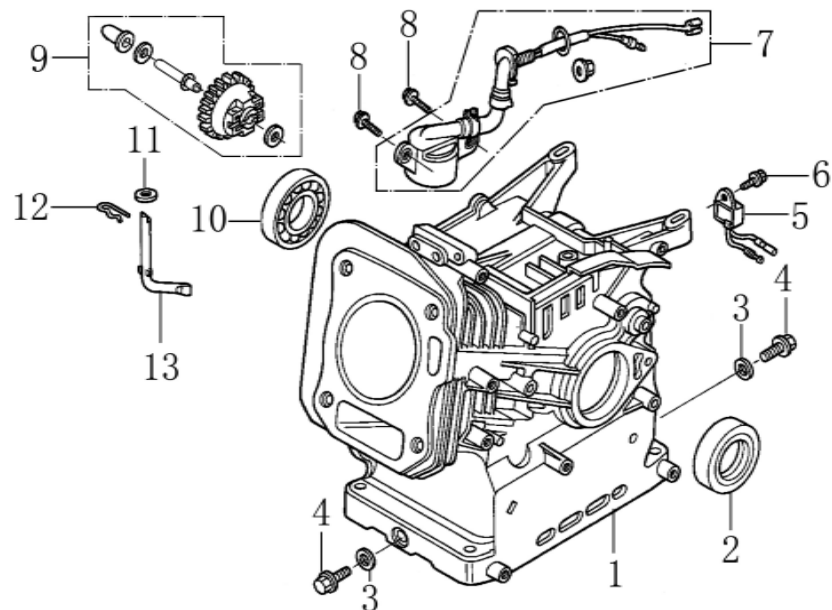


排污泵 (TRASH PUMP)



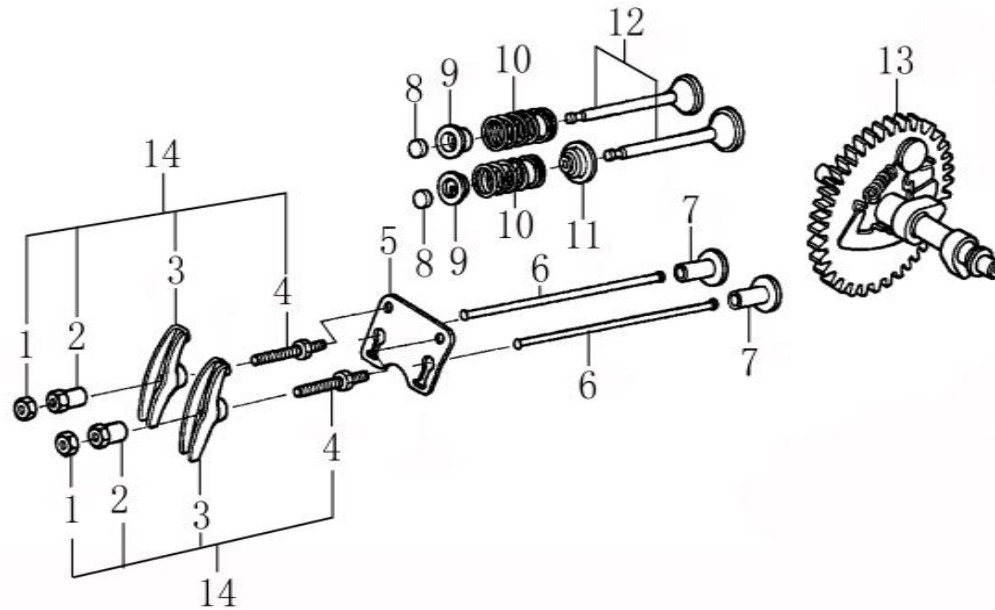
高扬程泵 (HIGH LIFT PUMP)





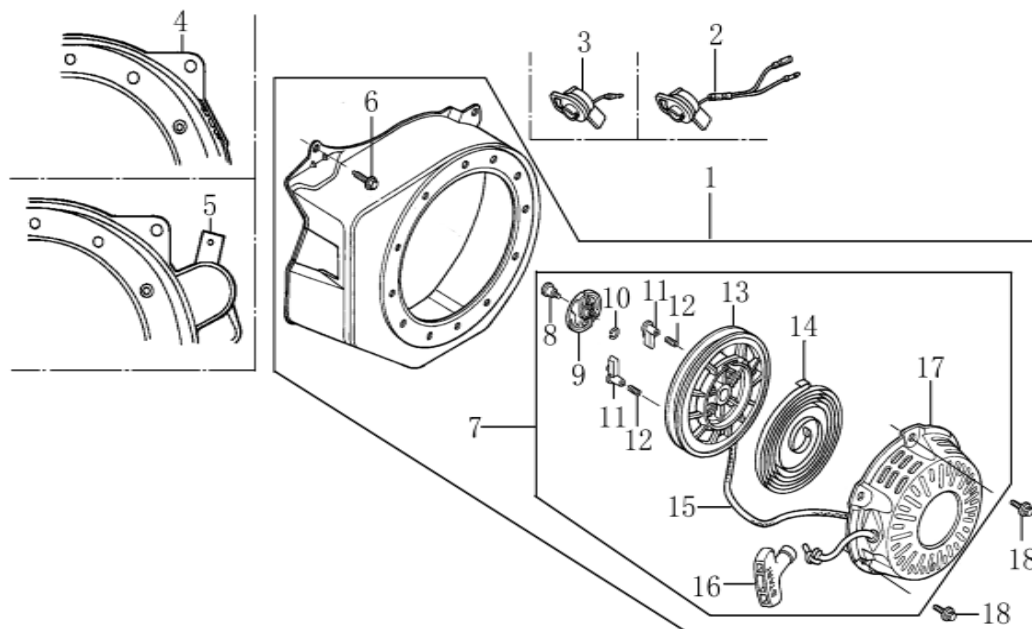
曲轴箱体(CRANK CASE)

序号 No.	零部件图号 Part No.	零部件名称	Description	数量 (Reqd. QTY)			
				LC50ZB23-3.1Q(A)	LC80ZB20-3.1Q(A)	LC80WB30-4.5Q	LC50ZB60-4.5Q
1	110810004-T040	曲轴箱体	CRANK CASE	1	1	-	-
	110810006-T050	曲轴箱体	CRANK CASE	-	-	1	1
2	380650334-T040	油封25×41.25×6	OIL SEAL 25×41.25×6	1	1	1	1
3	380450514-T040	平垫圈	WASHER , DRAIN PLUG	2	2	2	2
4	110260025-T040	密封螺塞	BOLT , DRAIN PLUG	2	2	2	2
5	281890001-T040	机油保护器	ALART UNIT ,OIL	1	1	1	1
6	380140011-T040	螺栓 M6×10	BOLT , FLANGE , 6×10	1	1	1	1
7	281850150-T040	油位传感器	OIL LEVEL SWITCH	1	1	1	1
8	380140215-T040	法兰面螺栓 M6×14	BOLT , FLANGE , 6×14	2	2	2	2
9	171750002-T040	调速齿轮部件	GOVERNOR ASSY.	1	1	1	1
10	380630137-T040	轴承6205	BEARING , RADIAL BALL	1	1	1	1
11	380450531-T040	平垫圈	WASHER , PLAIN	1	1	1	1
12	381350004-T040	开口销	PIN , LOCK	1	1	1	1
13	171630001-T040	调速臂	SHAFT , GOVERNOR ARM	1	1	1	1



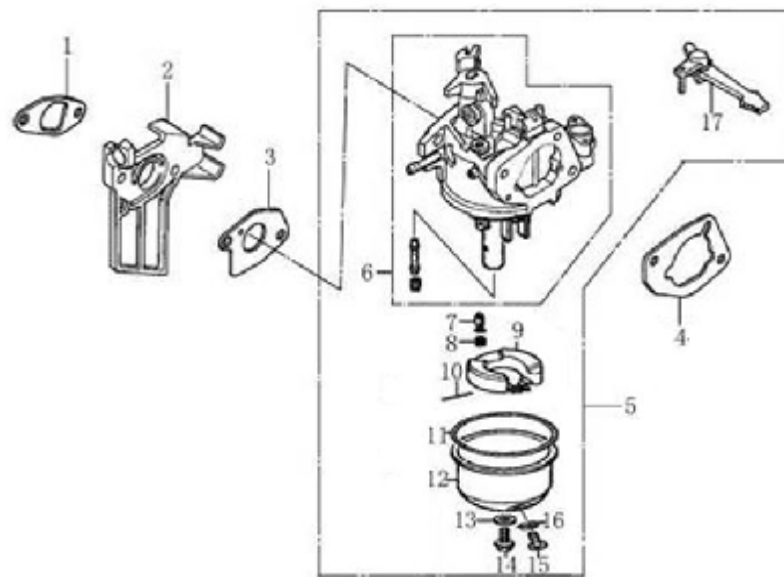
配气系统(GAS DISTRIBUTION ADJUSTMENT)

序号 No.	零部件图号 Part No.	零部件名称	Description	数量 (Reqd. QTY)			
				LC50ZB23-3.1Q(A)	LC80ZB20-3.1Q(A)	LC80WB30-4.5Q	LC50ZB60-4.5Q
1	140470001-T040	气门锁紧螺母	NUT , PIVOT ADJUSTING	2	2	2	2
2	140490012-T040	气门调节螺母	PIVOT , ROCKER ARM	2	2	2	2
3	140460030-T040	(进)气门摇臂部件	ARM , VALVE ROCKER	2	2	2	2
4	140480012-T040	气门调节螺栓	BOLT , PIVOT ARM	2	2	2	2
5	140710001-T040	推杆限位板组合	PLATE , PUSH ROD GUIDE	1	1	1	1
6	140670004-T040	推杆组合	ROD , PUSH	2	2	2	2
7	140690002-T040	挺柱	LIFTER , VALVE	2	2	-	-
	140690003-T050	挺柱	LIFTER , VALVE	-	-	2	2
8	140320001-T040	气门调整帽	RATATOR , VALVE	2	2	2	2
9	140380017-T040	气门弹簧座	RETAINER , VALVE SPRING	2	2	2	2
10	140340022-T040	气门内弹簧	SPRING , VALVE	2	2	2	2
11	140400011-T040	挡油罩	SEAL , GUIDE	1	1	1	1
12	500550024-T040	气门套件	VALVE COMP.	1	1	1	1
13	140020044-T040	凸轮轴	CAMSHAFT ASSY.	1	1	-	-



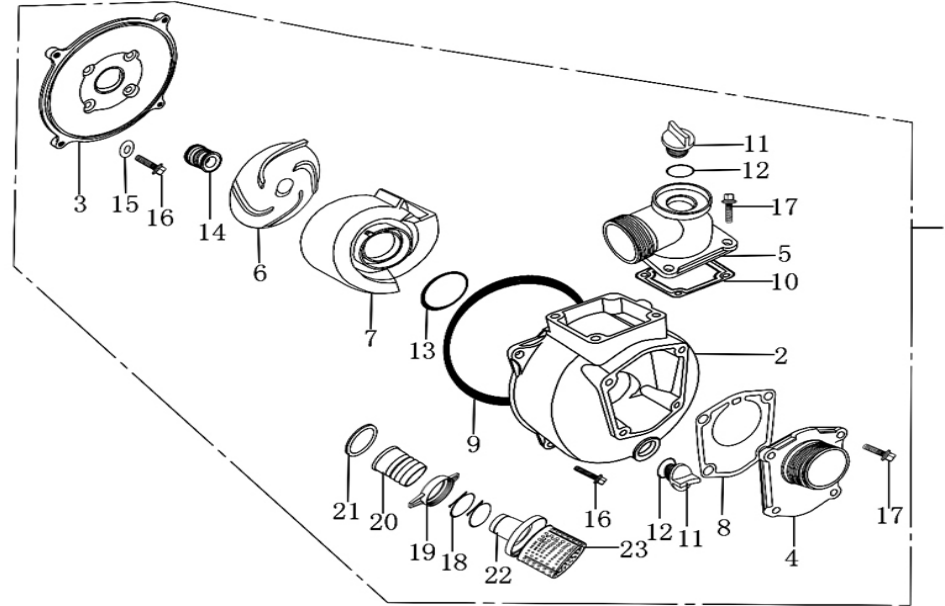
起动机组件 (STARTER SUBASSEMBLY)

序号 No.	零部件图号 Part No.	零部件名称	Description	数量 (Reqd. QTY)			
				LC50ZB23-3.1Q(A)	LC80ZB20-3.1Q(A)	LC80WB30-4.5Q	LC50ZB60-4.5Q
1	193490011-T040	手起动机组件	RECOIL STARTER COMP.	1	1	1	1
2	271660028-T040	熄火开关	SWITCH ASSY., ENGINE STOP	1	1	1	1
3	271660027-T040	熄火开关	SWITCH ASSY., ENGINE STOP(OIL ALERT)	1	1	1	1
4	160210005-T040	风扇罩	COVER COMP., FAN	1	1	1	1
5	160210006-T040	风扇罩	COVER COMP., FAN	1	1	1	1
6	380140011-T040	螺栓 M6×10	BOLT, FLANGE 6×10	4	4	4	4
7	193500008-T040	手起动机部件	STARTER ASSY.	1	1	1	1
8	380020067-T040	导向板紧固螺钉	SCREW, SETTING	1	1	1	1
9	193550003-T040	驱动导向板	GUIDE, RATCHET	1	1	1	1
10	381150342-T040	压簧	SPRING, FRICTION	1	1	1	1
11	193540003-T040	驱动凸轮	RATCHET, STARTER	2	2	2	2
12	381160090-T040	扭簧	SPRING, RETURN	2	2	2	2
13	193520003-T040	拉绳盘	REEL, RECOIL STARTER	1	1	1	1
14	193340018-T040	起动机复位弹簧	SPRING, RECOIL STARTER	1	1	1	1



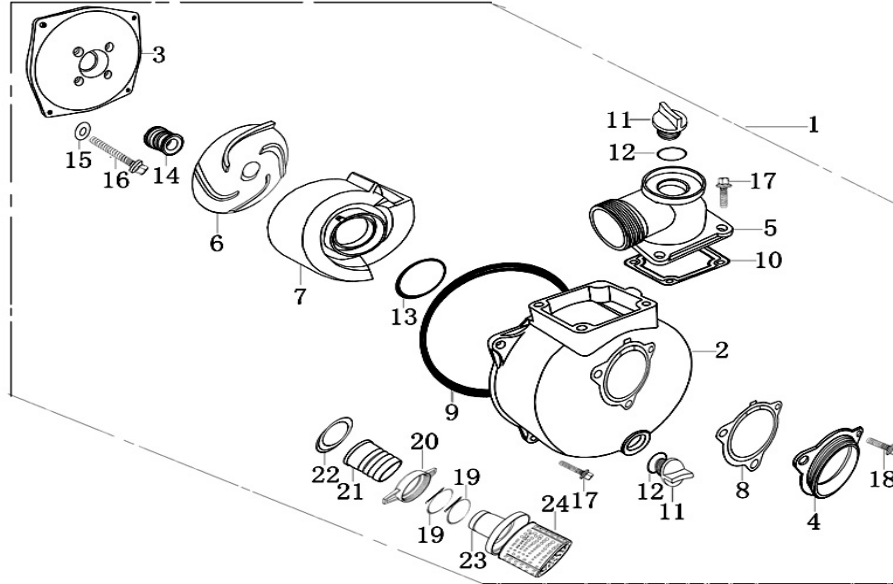
化油器 (CARBURETOR)

序号 No.	零部件图号 Part No.	零部件名称	Description	数量 (Reqd. QTY)			
				LC50ZB23-3.1Q(A)	LC80ZB20-3.1Q(A)	LC80WB30-4.5Q	LC50ZB60-4.5Q
1	170430060-T05K	化油器密封垫	PACKING , INSULATOR	1	1	1	1
2	170440038-T040	化油器隔热垫	INSULATOR , CARBURETOR	1	1	1	1
3	170430048-T05K	化油器密封垫	PACKING ., CARBURETOR	1	1	1	1
4	170430065-T040	化油器密封垫	SPACER COMP ., AIR CLEANER	1	1	1	1
5	170020405-T040	化油器	CARBURETOR	1	1	-	-
	170020406-T050	化油器	CARBURETOR	-	-	1	1
6	170160029-T040	化油器主体	CARBURETOR'S NOUMENON	1	1	-	-
	170160032-T050	化油器主体	CARBURETOR'S NOUMENON	-	-	1	1
7	170180050-T040	针阀	VALVE , FLOAT	1	1	1	1
8	381150336-T040	压簧	SPRING , VALVE SET	1	1	1	1
9	170280019-T040	浮子	FLOAT	1	1	1	1
10	170290017-T040	浮子销	PIN , FLOAT	1	1	1	1
11	380840455-T040	密封圈	GASKET , OIL CUP	1	1	1	1
12	170250021-T040	浮子室	OIL CUP	1	1	1	1



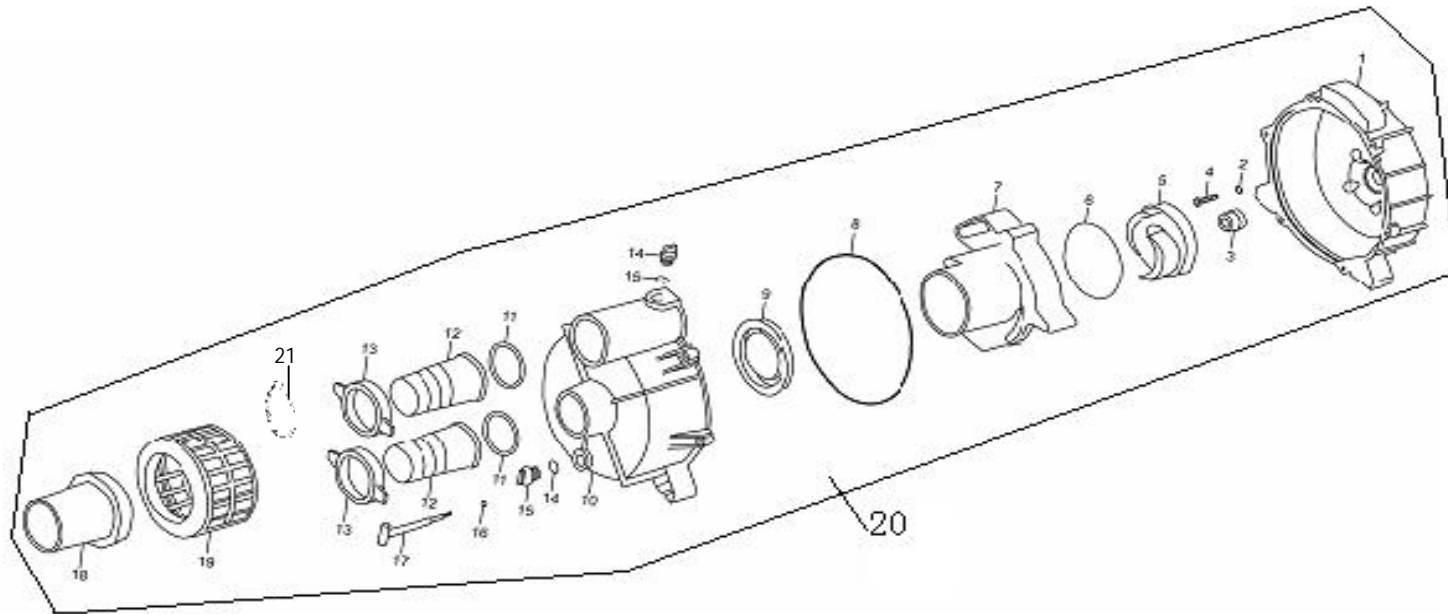
2寸水泵 (2" PUMP)

序号 No.	零部件图号 Part No.	零部件名称	Description	数量(Reqd. No.)			
				LC50ZB23-3.1Q(A)	LC80ZB20-3.1Q (A)	LC80WB230-4.5Q	LC50ZB60-4.5Q
1	660180002-T810	水泵部件	PUMP COMP.	1	-	-	-
2	660220002-T810	泵体	HOUSING OF PUMP	1	-	-	-
3	660190002-T810	支座	PUMP COVER	1	-	-	-
4	660230001-T810	负压法兰	FLANGE , ENDURE PRESS	1	-	-	-
5	660250001-T810	输出法兰	FLANGE , OUTPUT	1	-	-	-
6	660200001-T810	水泵叶轮	WATER PUMP IMPELLER	1	-	-	-
7	660210001-T810	涡壳	VOLUTE CASING	1	-	-	-
8	660320001-T810	吸入阀	CHECK VALVE	1	-	-	-
9	380840459-T810	密封圈 196×4	O-RING 196×4	1	-	-	-
10	660260002-T810	输出法兰垫	SEAL , OUTPUT	1	-	-	-
11	660240001-T810	螺塞	PLUG	2	-	-	-
12	380840501-T810	密封圈 25×4	O-RING 25×4	2	-	-	-
13	380840460-T810	密封圈 57.5×6	O-RING 57.5×6	1	-	-	-
14	660350001-T810	机械密封组合	MACHINERY SEAL	1	-	-	-



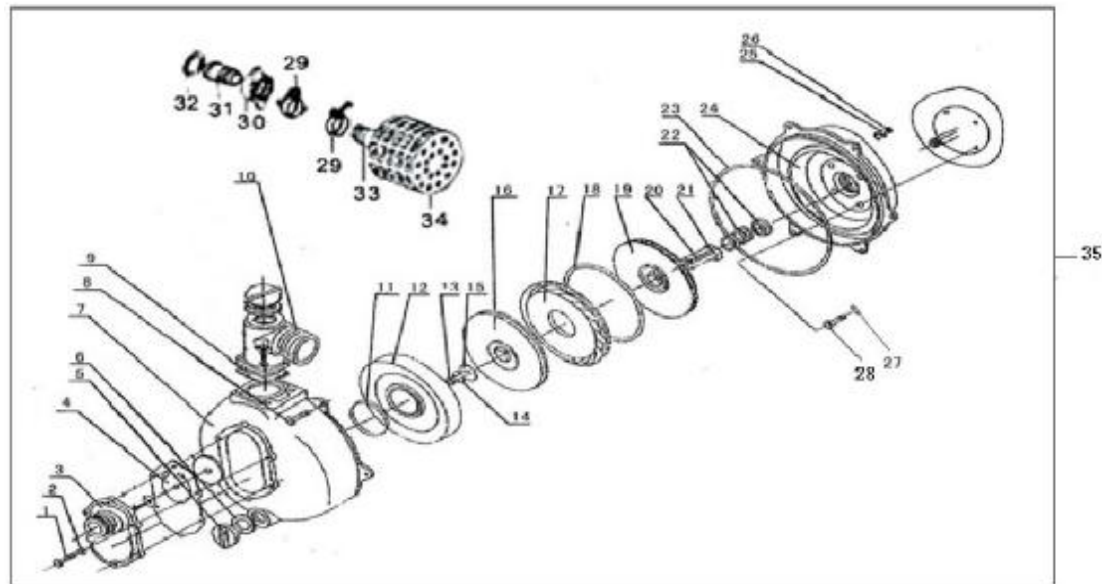
3寸水泵 (3" PUMP)

序号 No.	零部件图号 Part No.	零部件名称	Description	数量(Reqd. No.)			
				LC50ZB23-3.1Q(A)	LC80ZB20-3.1Q(A)	LC80WB20-4.5Q	LC50ZB60-4.5Q
1	660180004-T820	水泵部件	PUMP COMP.	-	1	-	-
2	660220003-T820	泵体	HOUSING OF PUMP	-	1	-	-
3	660190001-T820	支座	PUMP COVER	-	1	-	-
4	660230002-T820	负压法兰	FLANGE , ENDURE PRESS	-	1	-	-
5	660250002-T820	输出法兰	FLANGE , OUTPUT	-	1	-	-
6	660200002-T820	水泵叶轮	WATER PUMP IMPELLER	-	1	-	-
7	660210002-T820	涡壳	VOLUTE CASING	-	1	-	-
8	660320002-T820	吸入阀	CHECK VALVE	-	1	-	-
9	380840535-T820	密封圈 226×4	O-RING 226×4	-	1	-	-
10	660260001-T820	输出法兰垫	SEAL , OUTPUT	-	1	-	-
11	660240001-T810	螺塞	PLUG	-	2	-	-
12	380840501-T810	密封圈 25×5	O-RING 25×5	-	2	-	-
13	380840536-T820	密封圈 74×6.5	O-RING 74×6.5	-	1	-	-
14	660350002-T820	机械密封组合	MACHINERY SEAL	-	1	-	-



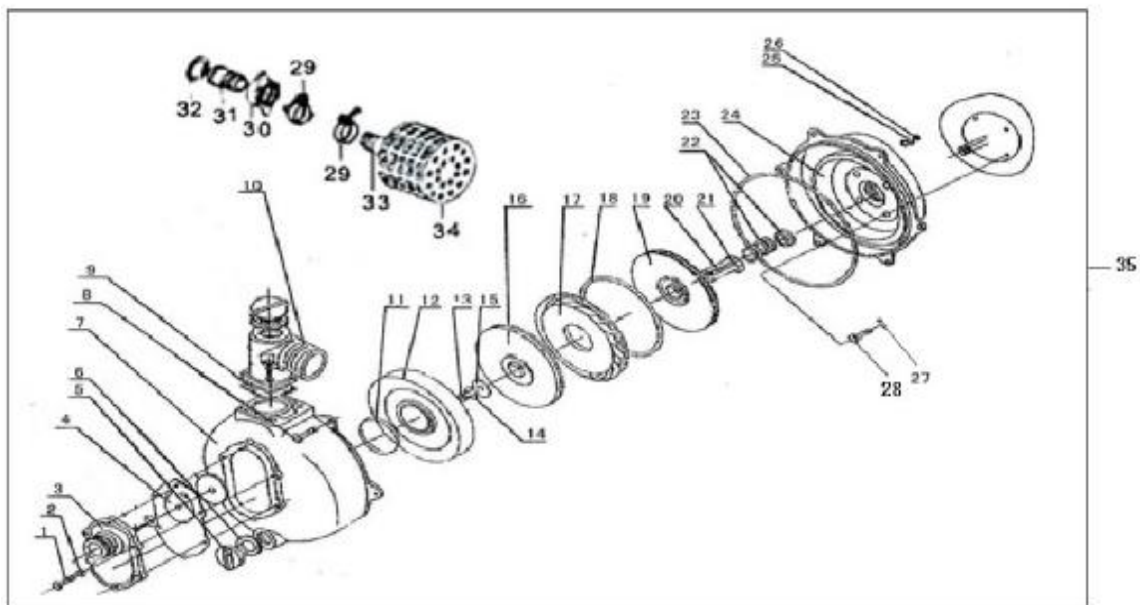
排污泵 (TRASH PUMP)

序号 No.	零部件图号 Part No.	零部件名称	Description	数量(Reqd. No.)			
				LC50ZB60-4.5Q	LC80ZB20-3.1Q(A)	LC80WB30-4.5Q	LC50ZB60-4.5Q
1	660190006-T830	支座	PUMP COVER	-	-	1	-
2	660830001-0001	支座螺栓密封垫圈	WASHER,SEALING	-	-	4	-
3	660350003-T830	机械密封组合	MACHINERY SEAL	-	-	1	-
4	380140101-T830	六角法兰面螺栓M8×35	BOLT 8×35	-	-	4	-
5	660200005-T830	水泵叶轮	WATER PUMP IMPELLER	-	-	1	-
6	380840452-T830	密封圈 133×3	O-RING 133×3	-	-	1	-
7	660210006-T830	涡壳	VOLUTE CASING	-	-	1	-
8	380840451-T830	密封圈 267×5	O-RING 267×5	-	-	1	-
9	660320006-T830	吸入阀	CHECK VALVE	-	-	1	-
10	660220006-T830	泵体	HOUSING OF PUMP	-	-	1	-
11	380840442-T830	密封圈	SEAL , LINKER	-	-	2	-
12	660280005-T830	软管接口	TIE-IN , TUBE	-	-	2	-
13	660270005-T830	吸水管接头	LINKER , TUBE	-	-	2	-
14	380840501-0001	密封圈 25×5	SEAL , LINKER 25×5	-	-	2	-



高扬程泵 (HIGH LIFT PUMP)

序号 No.	零部件图号 Part No.	零部件名称	Description	数量(Reqd. No.)			
				LC50ZB23-3.1Q	LC80ZB20-3.1Q	LC50ZB60-4.5Q	LC80WB30-4.5Q
1	380070045-0005	六角头螺栓M8×25	BOLT M8×25	-	-	10	-
2	380450003-T812	平垫圈 8	WAHER 8	-	-	10	-
3	660230005-T812	负压法兰	FLANGE , ENDURE PRESS	-	-	1	-
4	660320007-T812	吸入阀	CHECK VALVE	-	-	1	-
5	660240005-T812	螺塞	PLUG	-	-	2	-
6	380840532-T812	密封圈	GASKET	-	-	2	-
7	660220005-T812	泵体	HOUSING OF PUMP	-	-	1	-
8	380070100-T812	六角螺栓M10×40	BOLT M10×40	-	-	6	-
9	660260005-T812	输出法兰垫	SEAL , OUTPUT	-	-	1	-
10	660250005-T812	输出法兰	FLANGE , OUTPUT	-	-	1	-
11	380840539-T812	密封圈	GASKET	-	-	1	-
12	661340002-T812	蜗壳盖	COVER OF IMPELLER	-	-	1	-
13	380070070-0001	六角螺栓M10×20	BOLT M10×20	-	-	1	-
14	380460002-T812	弹簧垫圈 10	SPRING WAHER	-	-	7	-



高扬程泵 (HIGH LIFT PUMP)

序号 No.	零部件图号 Part No.	零部件名称	Description	数量(Reqd. No.)			
				LC50ZB23-3.1Q	LC80ZB20-3.1Q	LC50ZB60-4.5Q	LC80WB30-4.5Q
15	380450515-T812	平垫圈	WAHER	-	-	1	-
16	660200008-0001	水泵叶轮 (一级)	WATER PUMP IMPELLER	-	-	1	-
17	660210005-T812	涡壳	VOLUTE CASING	-	-	1	-
18	380840531-T812	密封圈	O-RING	-	-	1	-
19	660200009-0001	水泵叶轮 (二级)	WATER PUMP IMPELLER	-	-	1	-
20	380620060-T812	键35×4×4	KEY 35×4×4	-	-	1	-
21	660810001-T812	叶轮芯轴	WATER PUMP IMPELLER	-	-	1	-
22	660350007-T812	机械密封组合	MACHINERY SEAL	-	-	1	-
23	380840538-T812	密封圈	O-RING	-	-	1	-
24	660190005-T812	支座	PUMP COVER	-	-	1	-
25	380450006-T812	平垫圈 10	WASHER 10	-	-	12	-
26	380340010-0004	六角螺母M10	NUT 10	-	-	6	-
27	380450872-0001	平垫圈	WASHER 8.5	-	-	4	-
28	380140071-0002	法兰面螺栓M8×40	BOLT M8×40	-	-	4	-



隆鑫通用动力股份有限公司

Loncin motor co., Ltd.

详细地址：重庆市九龙坡区九龙工业园区华龙大道99号

Add:No.99Hualong Road,Jiulongpo District,Chongqing,China

Tel:86 23 8980 5678/86 23 8980 8505

Fax:86 23 8906 7566

Email:service@loncinengine.com

Website:www.loncinengine.com

PRINTED IN CHINA