



# 汽油机零部件图册

PART CATALOGUE

**LC2P77F**

**LC2P80F**

**LC2P82F**



版本号 **VERSION No.:** 2011-01

隆鑫通用动力股份有限公司

LONCIN MOTOR CO.,LTD.

# 零件目录使用说明(Instruction for use of parts catalogue)

本零件目录是根据2011年1月所能得到的最新资料编制而成的。

This parts catalogue was prepared based on the latest information available as of August 2011.

请注意2011年1月以后本零部件目录的修订通知。

See the parts catalogue news for any revision that is made after August 2011.

当订购零件时，一定要明确指出其零件编号。

Always specify the part number when ordering a part.

注意本零件目录所给出的图形可能与实际零件外形有所不同。

Note that the illustrations can differ from the actual parts in shape.

当需要对零部件目录的内容进行更改或增加时，本公司将在适当的时间出版修订版，为保证在任何时候都可以使用到最新版本的零部件目录建议拥有最新的修订版本。如果要检查修订版本是否已经发行，请直接与LONCIN联系。

When modifications or additions to this parts catalogue are made, a revised edition will be issued at an appropriate time, We recommend obtaining such revisions in order to keep your parts catalogue up-to-date at all times. To check whether a parts catalogue revision has been issued, please contact your LONCIN distributor.

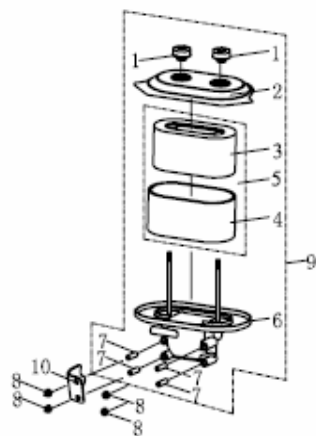
示例 (Example)

序号 No.	零部件图号 Part No.	零部件名称	Description	数量 (Reqd. QTY)				
				2P77F	2P80F	2P82F		
2	130030155-T400	活塞	Piston	2	-	-		
	130030129-T390	活塞	Piston	-	2	-		
	130030156-T410	活塞	Piston	-	-	2		

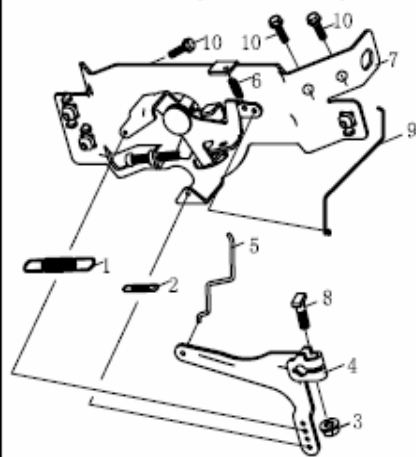
2表示2P77F装配2个130030155-T400，2P80F装配2个130030129-T390，2P82F装配2个130030156-T410

[2 means 2P77F require 2 QTY 130030155-T400, 2P77F require 2 QTY 130030129-T390, 2P77F require 2 QTY 130030156-T410]

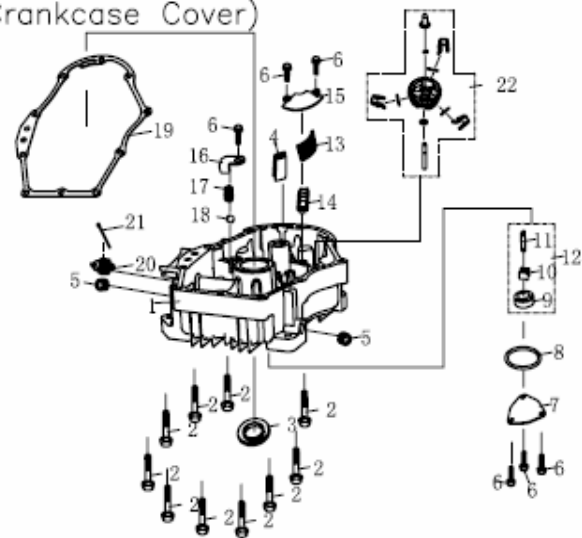
空滤器 (Air Cleaner)



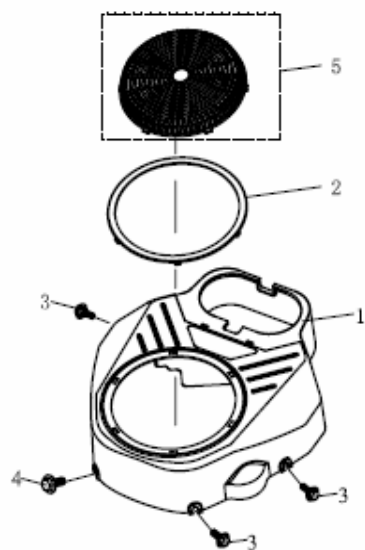
调速控制 (Governor)



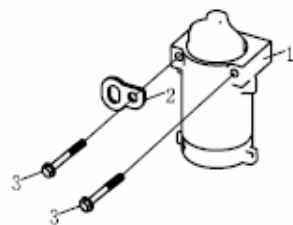
箱盖 (Crankcase Cover)



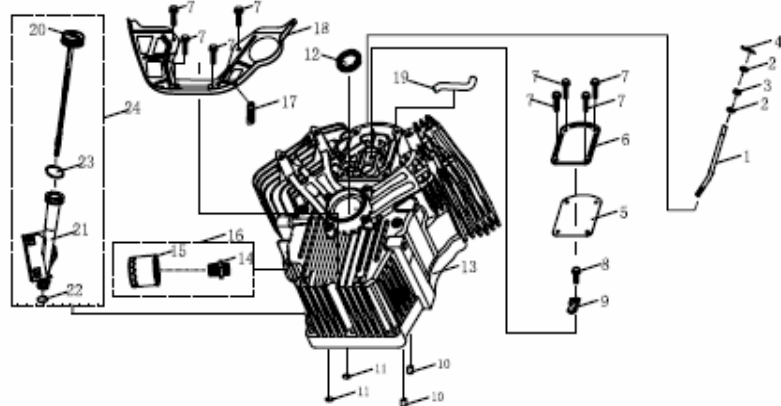
空滤器 (Air Cleaner)



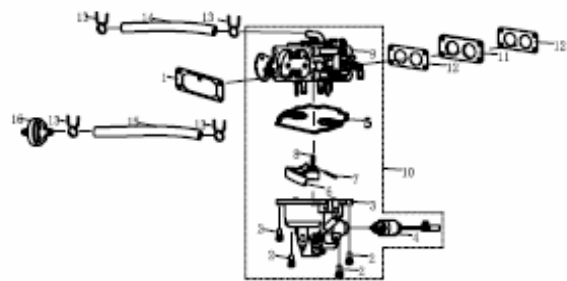
电机 (Starting Motor)



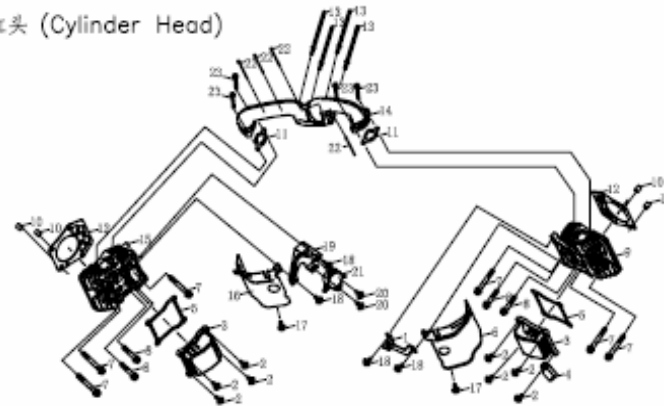
箱体 (Crankcase)



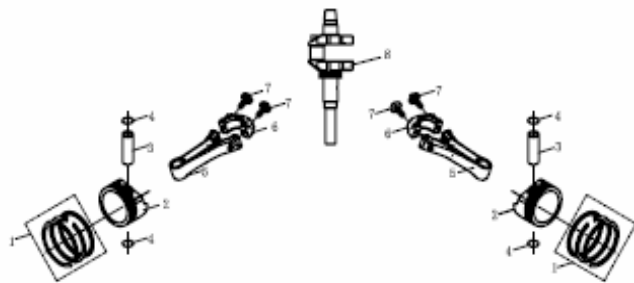
化油器 (Carburetor)



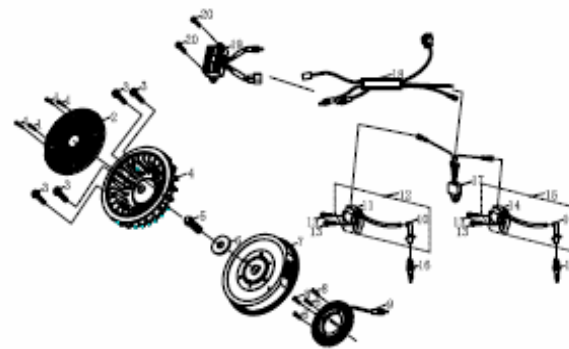
缸头 (Cylinder Head)



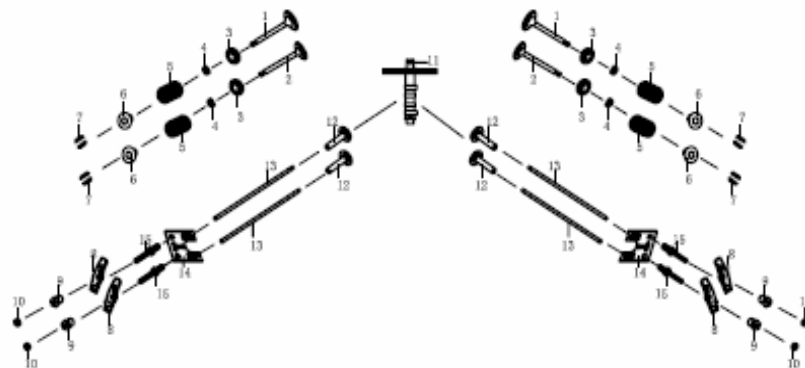
曲轴活塞 (Crankshaft/Piston)



飞轮/点火线圈  
(Flywheel/Coil Assy.)

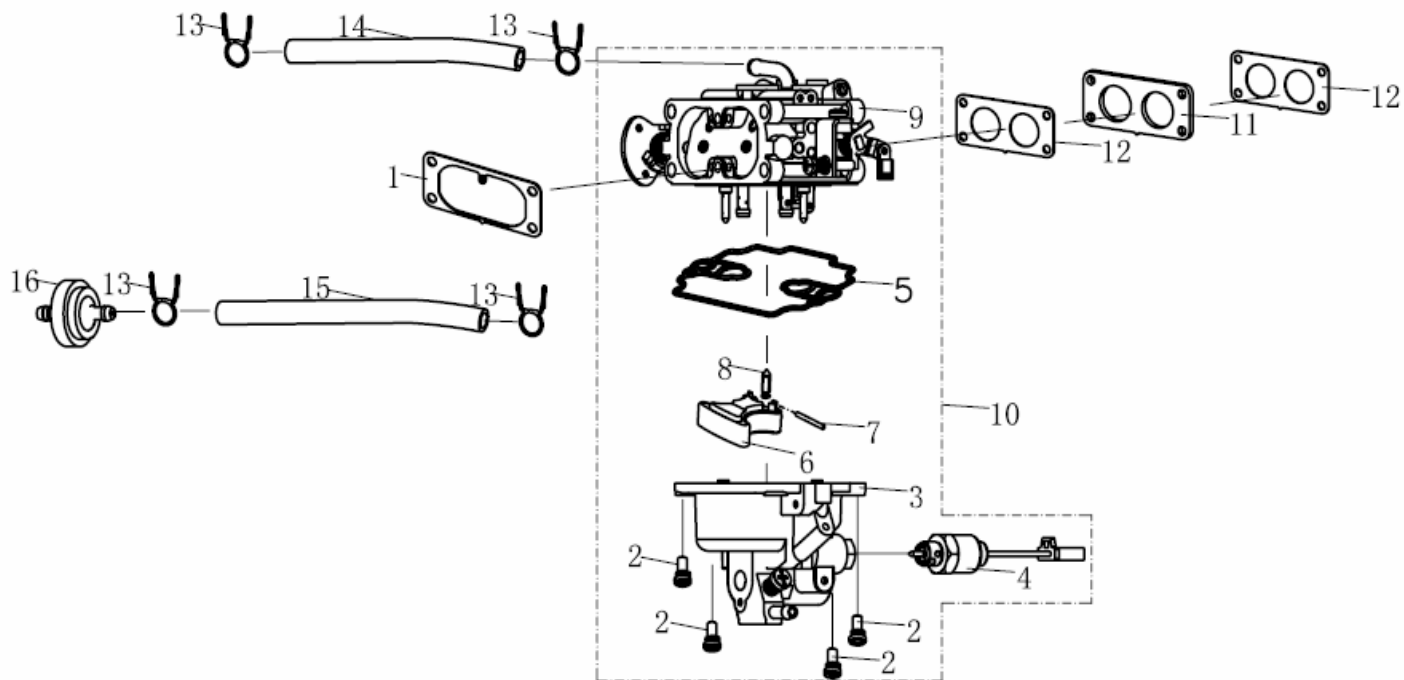


配气机构 (Valve)





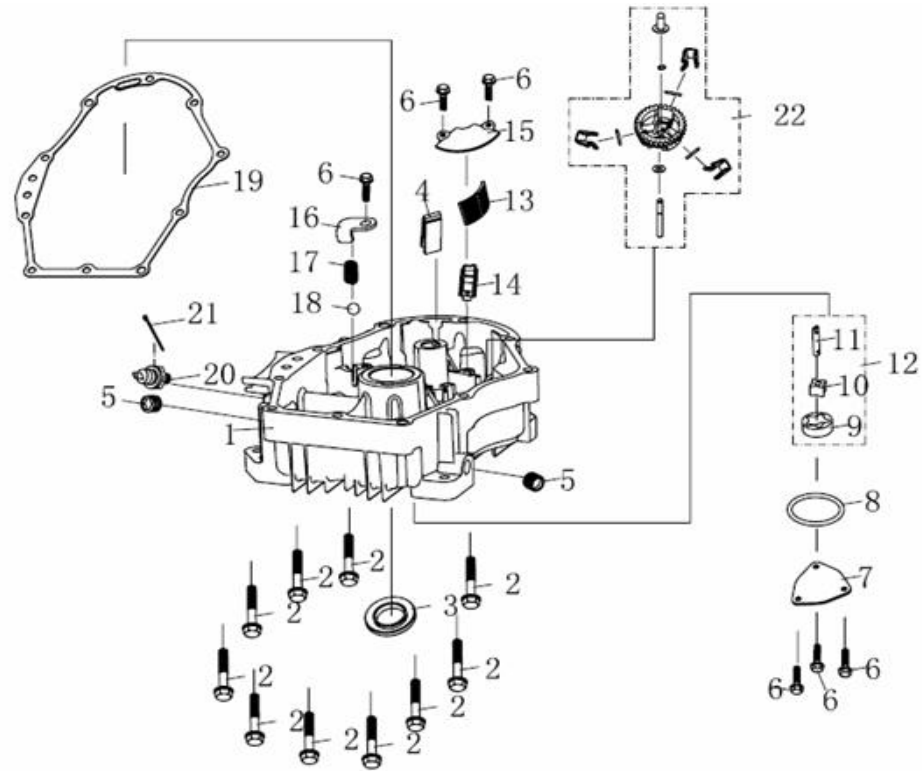




化油器 (Carburetor)

序号 No.	零部件图号 Part No.	零部件名称	Description	数量 (Reqd. QTY)			
				2P77F	2P80F	2P82F	
1	170430108-T390	化油器密封垫	Packing, carburetor	1	1	1	
2	380670010-T390	十字盘头螺钉/弹垫组合	Screw/elastic gasket	4	4	4	
3	170240030-T390	浮子室组合	Oil cup	1	1	1	
4	170420003-T390	电磁阀	Solenoid valve	1	1	1	
5	170050030-T390	浮子室密封垫	Oil cup gasket	1	1	1	
6	170280032-T390	浮子	Float	1	1	1	
7	170290030-T390	浮子销	Pin, float	1	1	1	
8	170180044-T390	针阀	Valve float	1	1	1	
9	170160081-T400	化油器主体	Noumenon, carburetor	1	-	-	
	170160080-T390	化油器主体	Noumenon, carburetor	-	1	-	
	170160082-T410	化油器主体	Noumenon, carburetor	-	-	1	
10	170020901-T400	化油器	Carburetor	1	-	-	
	170020882-T390	化油器	Carburetor	-	1	-	
	170020902-T410	化油器	Carburetor	-	-	1	
11	170440073-T390	化油器隔热垫	Insulator, carburetor	1	1	1	

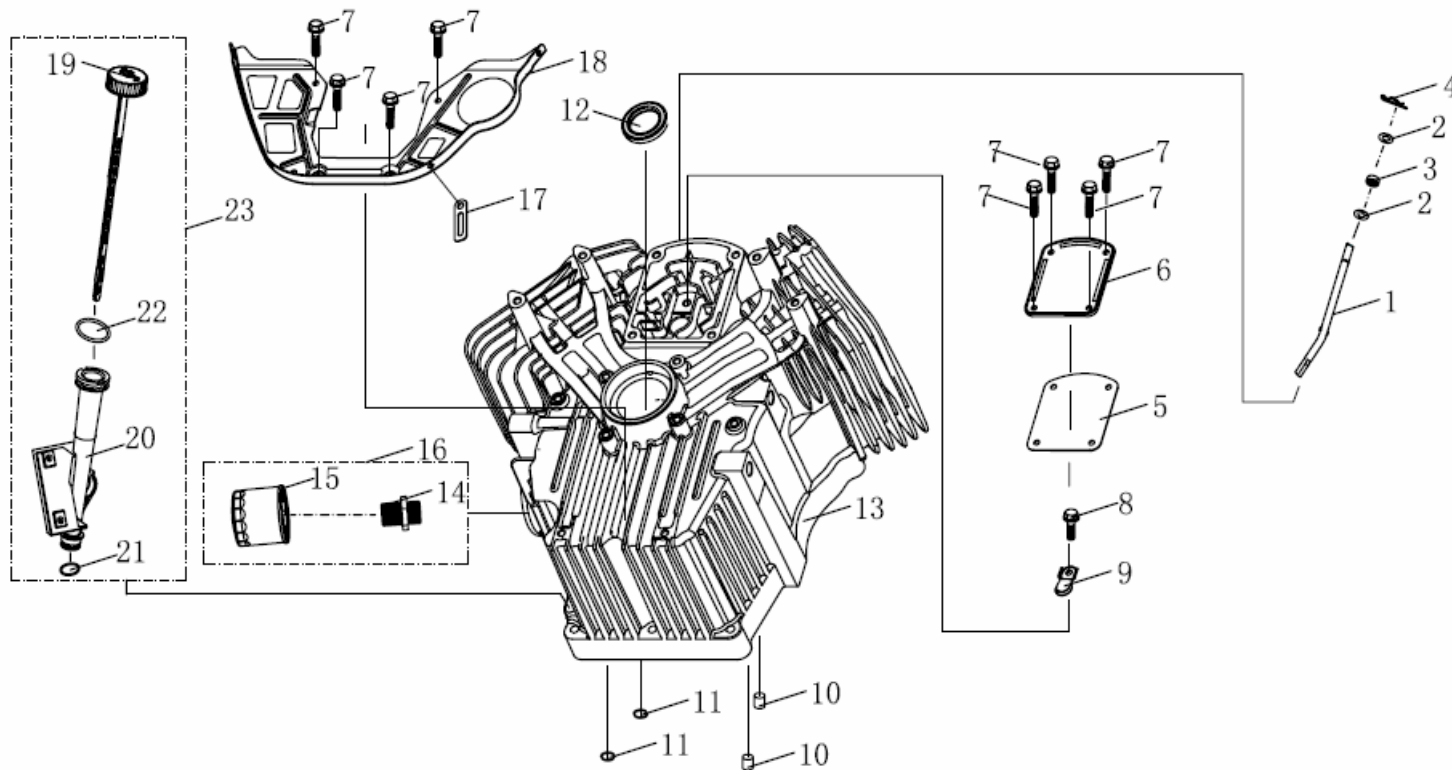




箱盖 (Crankcase Cover)

序号 No.	零部件图号 Part No.	零部件名称	Description	数量 (Reqd. QTY)			
				2P77F	2P80F	2P82F	
1	110820049-T390	曲轴箱盖	Cover, breather side	1	1	1	
2	380140338-0001	六角头法兰面螺栓M8×55	Bolt, flange M8×55	10	10	10	
3	380650436-T390	油封 φ35×φ62×8	Oil seal, φ35×φ62×8	1	1	1	
4	150570003-T370	机油回油块	Rubber, oil deflector	1	1	1	
5	110260026-T370	密封螺塞	Drain bolt 3/8-18 nptf	2	2	2	
6	380140013-0005	六角头法兰面螺栓M6×16	Bolt, flange M6×16	6	6	6	
7	150040025-T390	油泵盖	Oil pump cover	1	1	1	
8	380840665-T390	密封圈 47×3.5	Seal ring, oil pump 47×3.5	1	1	1	
9	150060031-T390	外转子	Rotor, outer	1	1	1	
10	150050032-T390	内转子	Rotor, inner	1	1	1	
11	150080033-T390	机油泵传动轴	Shaft oil pump	1	1	1	
12	150010061-T390	机油泵部件	Pump, oil	1	1	1	
13	150290019-T390	机油滤网	Oil strainer	1	1	1	
14	120530005-T390	油道压板	Oil baffle plate	1	1	1	
15	150340012-T390	机油滤网盖	Cover, oil strainer	1	1	1	



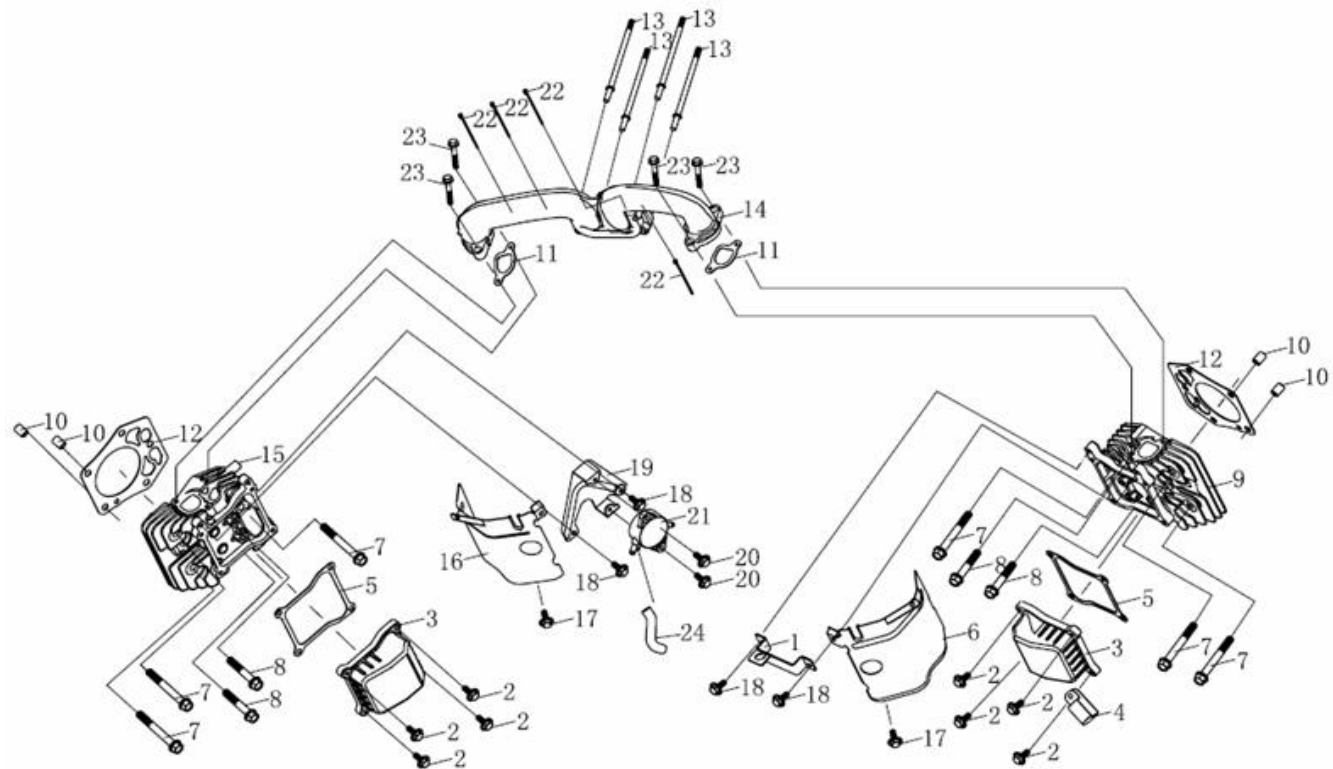


箱体 (Crankcase)

序号 No.	零部件图号 Part No.	零部件名称	Description	数量 (Reqd. QTY)			
				2P77F	2P80F	2P82F	
1	171630013-T390	调速臂	Shaft, governor arm	1	1	1	
2	380450559-T370	平垫圈 8×16×0.5	Washer	2	2	2	
3	380650339-T110	油封 φ8×φ14×4	Oil seal	1	1	1	
4	381350004-T040	销夹	Pin, lock	1	1	1	
5	110850012-T390	呼吸槽密封垫	Packing, breather chamber	1	1	1	
6	110840013-T390	呼吸槽盖板	Cap, breather chamber	1	1	1	
7	380140013-0005	六角头法兰面螺栓M6×16	Bolt, flange M6×16	8	8	8	
8	380140067-0003	六角头法兰面螺栓M6×12	Bolt, flange M6×12	1	1	1	
9	140250008-T390	簧片阀	Reed valve	1	1	1	
10	380600123-T370	定位销	Pin dowel	2	2	2	
11	380840443-T370	密封圈 12×2.5	O-ring 12×2.5	2	2	2	
12	380650337-T110	油封 φ35×φ52×7	Oil seal, φ35×φ52×7	1	1	1	
13	110810123-T400	曲轴箱体	Crank case comp	1	-	-	
	110810095-T390	曲轴箱体	Crank case comp	-	1	-	
	110810124-T410	曲轴箱体	Crank case comp	-	-	1	



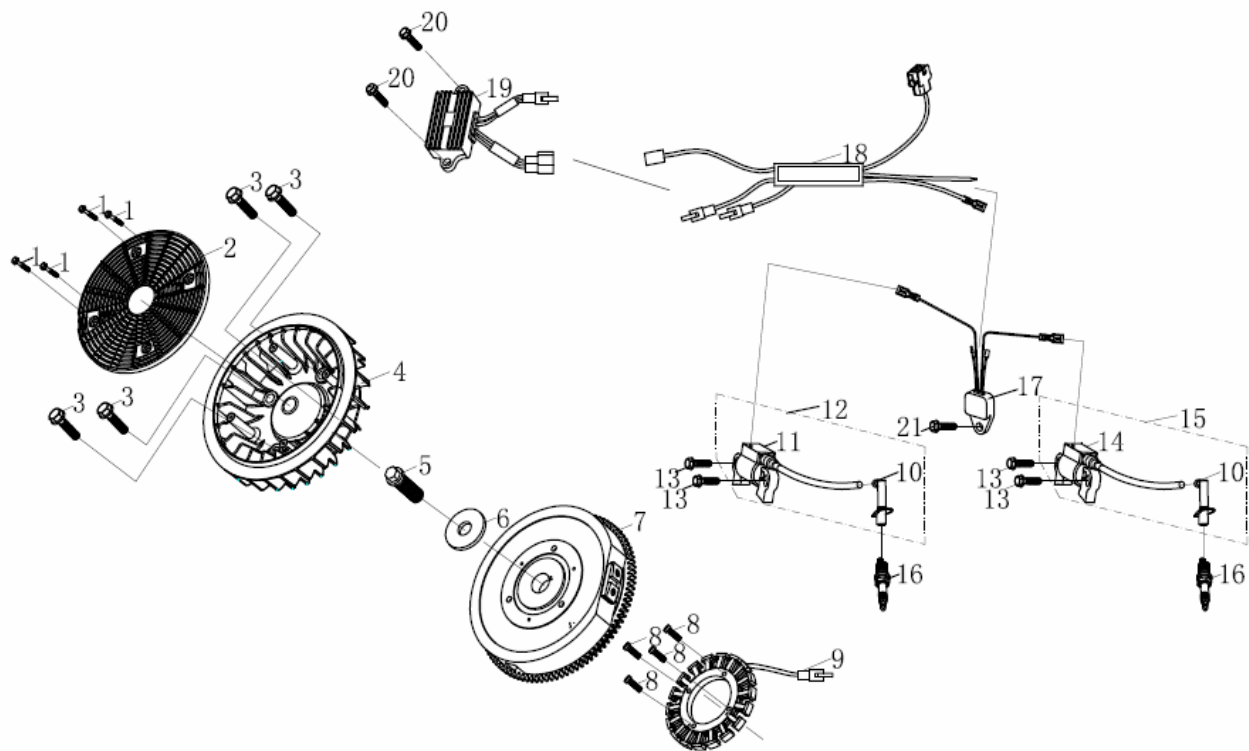




气缸头组件 (Cylinder Head)

序号 No.	零部件图号 Part No.	零部件名称	Description	数量 (Reqd. QTY)			
				2P77F	2P80F	2P82F	
1	120550003-T390	吊耳	Lifting eye	1	1	1	
2	380140103-0004	六角头法兰面螺栓	Bolt, flange M6×25	8	8	8	
3	120220025-T390	气缸头盖组合	Cover comp., head, left	2	2	2	
4	380940461-T390	线夹	Clamp	1	1	1	
5	120250023-T390	气缸头盖密封垫	Packing, head cover	2	2	2	
6	160190036-T390	空气导流罩	Shroud comp	1	1	1	
7	380140455-T390	六角头法兰面螺栓	Bolt, flange M10×70	6	6	6	
8	380140456-T390	六角头法兰面螺栓	Bolt, flange M10×50	4	4	4	
9	120080388-T390	气缸头	Head comp., cylinder	1	1	1	
10	380600129-T130	定位销	Pin, dowel 12×15	4	4	4	
11	170430106-T390	化油器密封垫	Packing, carburetor	2	2	2	
12	120150148-T400	气缸头密封垫	Gasket, cylinder	2	-	-	
	120150130-T390	气缸头密封垫	Gasket, cylinder	-	2	-	
	120150149-T410	气缸头密封垫	Gasket, cylinder	-	-	2	
13	380180130-T390	双头螺栓	Bolt, stud	4	4	4	





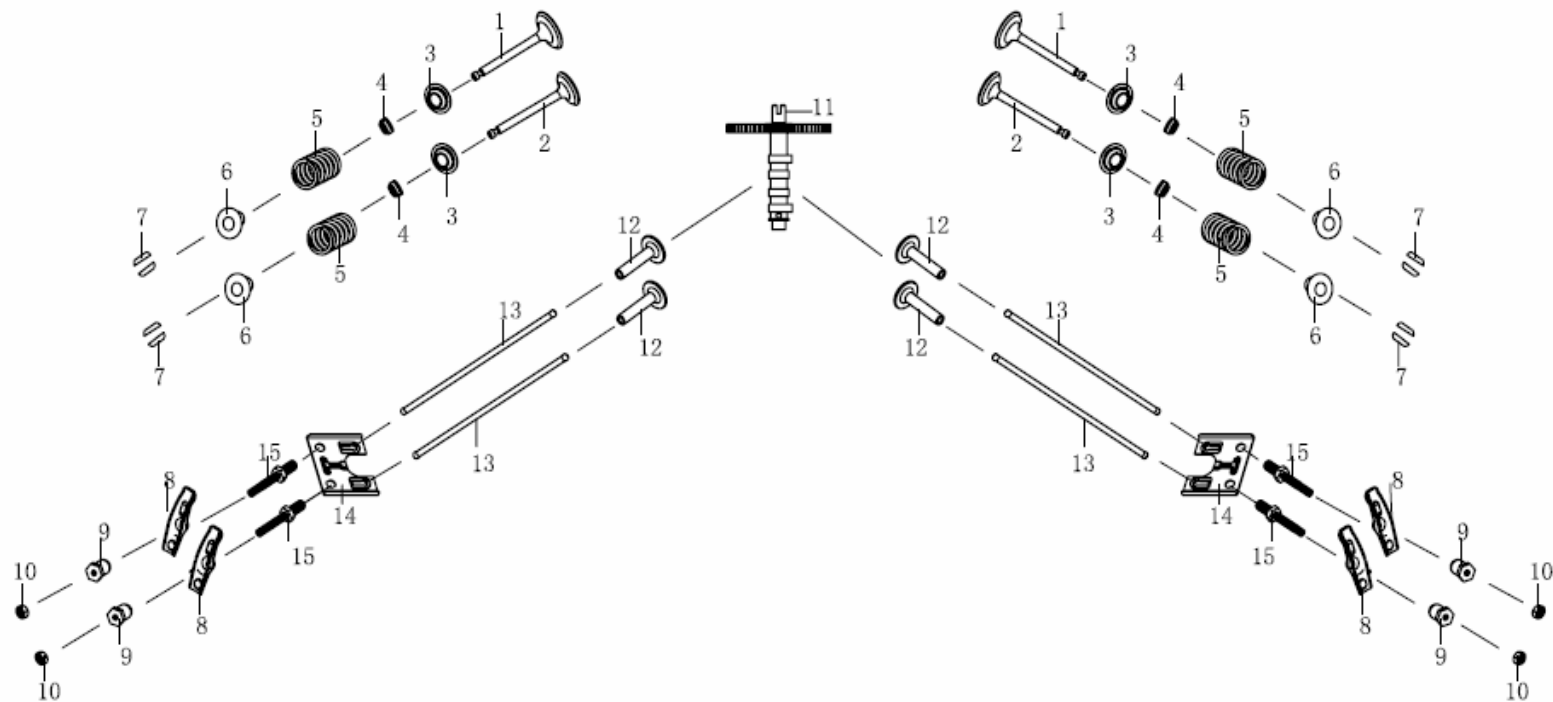
飞轮/点火器线圈 (Flywheel/Coil Assy.)

序号 No.	零部件图号 Part No.	零部件名称	Description	数量 (Reqd. QTY)			
				2P77F	2P80F	2P82F	
1	380140049-0003	六角头法兰面螺栓	Bol t, flange M5×16	4	4	4	
2	160850001-T390	叶轮罩	Cover fan	1	1	1	
3	380140451-0001	六角头法兰面螺栓	Bol t, flange M8×20	4	4	4	
4	160180020-T390	叶轮	Fan, cooling	1	1	1	
5	380140457-T390	六角头法兰面螺栓	Bol t, flange M12×35	1	1	1	
6	380450702-T390	平垫圈 13×38×3.5	Washer 13×38×3.5	1	1	1	
7	270020144-T390	磁电机转子部件	Flywheel comp	1	1	1	
8	380190039-0005	内六角螺钉	Hexagon bol t	4	4	4	
9	270190010-T390	充电线圈部件	Coil assy, charge	1	1	1	
10	270950067-T390	火花塞帽	Rubber, spark pl ug cap	2	2	2	
11	270930043-T390	点火线圈体	Coil, igni tion	1	1	1	
12	270920225-T390	点火线圈	Coil assy, igni tion	1	1	1	
13	380140086-0002	六角头法兰面螺栓	Bol t, flange M6×22	4	4	4	
14	270930044-T390	点火线圈体	Coil, igni tion	1	1	1	
15	270920224-T390	点火线圈	Coil assy, igni tion	1	1	1	









配气机构 (Valve)

序号 No.	零部件图号 Part No.	零部件名称	Description	数量 (Reqd. QTY)			
				2P77F	2P80F	2P82F	
1	140300057-T390	进气门	Valve, IN.	2	2	2	
2	140310057-T390	排气门	Valve, EX.	2	2	2	
3	140360010-T110	气门内弹簧座圈	Seat, valve spring	4	4	4	
4	140400012-T110	挡油罩	Seal, valve stem	4	4	4	
5	140340025-T11D	气门内弹簧	Spring, valve	4	4	4	
6	140380021-T11D	气门弹簧座	Retainer, ex. valve spring	4	4	4	
7	140390015-T11D	气门锁夹	Valve keeper	8	8	8	
8	140460036-T390	气门摇臂	Rocker arm	4	4	4	
9	140490012-T040	气门调节螺母	Pivot rocker arm	4	4	4	
10	140470001-T040	气门锁紧螺母	Nut, pivot adjusting	4	4	4	
11	140020072-T390	凸轮轴组合	Camshaft	1	1	1	
12	140690017-T390	挺柱	Lifter, valve	4	4	4	
13	140670021-T390	挺杆组合	Rod push	4	4	4	
14	140710010-T390	推杆限位板组合	Plate, assy	2	2	2	
15	140480012-T040	气门调节螺栓	Bolt pivot	4	4	4	



隆鑫通用动力股份有限公司

Loncin motor co., Ltd.

详细地址：重庆市九龙坡区九龙工业园区华龙大道99号

Add:No.99Hualong Road,Jiulongpo District,Chongqing,China

Tel:86 23 8980 5678/86 23 8980 8505

Fax:86 23 8906 7566

Email:service@loncinengine.com

Website:www.loncinengine.com

**PRINTED IN CHINA**