



# 汽油机零部件图册

PART CATALOGUE

**LC1P88F**

**LC1P90F**



版本号 **VERSION No.:** 2011-01

隆鑫通用动力股份有限公司

LONCIN MOTOR CO.,LTD.

## 零件目录使用说明(Instruction for use of parts catalogue)

本零件目录是根据2011年1月所能得到的最新资料编制而成的。

This parts catalogue was prepared based on the latest information available as of May 2011.

请注意2011年1月以后本零部件目录的修订通知。

See the parts catalogue news for any revision that is made after May 2011.

当订购零件时，一定要明确指出其零件编号。

Always specify the part number when ordering a part.

注意本零件目录所给出的图形可能与实际零件外形有所不同。

Note that the illustrations can differ from the actual parts in shape.

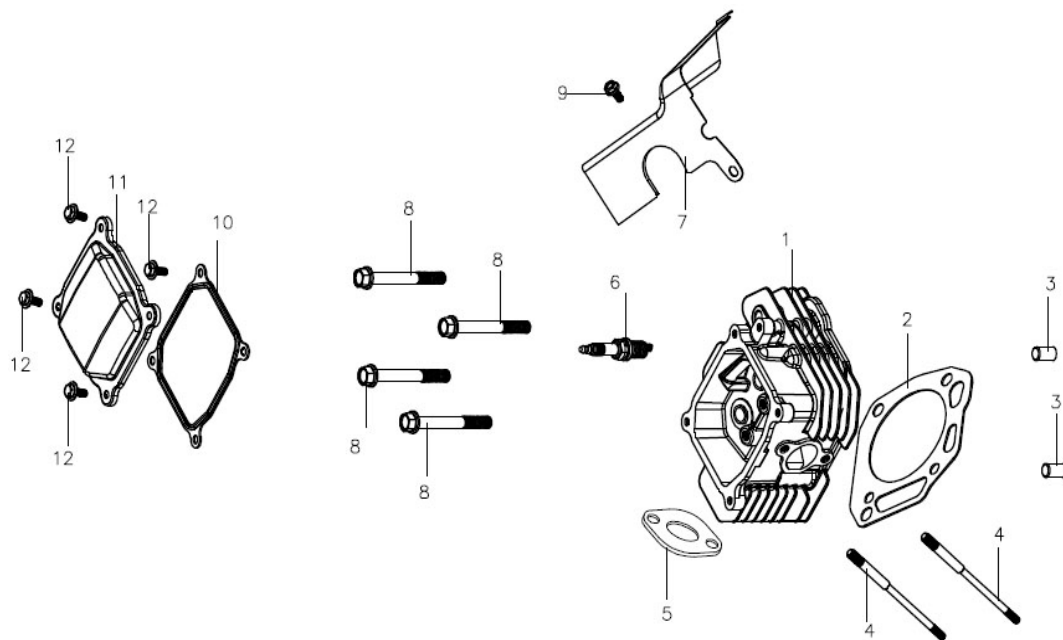
当需要对零部件目录的内容进行更改或增加时，本公司将在适当的时间出版修订版，为保证在任何时候都可以使用到最新版本的零部

When modifications or additions to this parts catalogue are made , a revised edition will be issued at an appropriate time,We

示例 (Example)

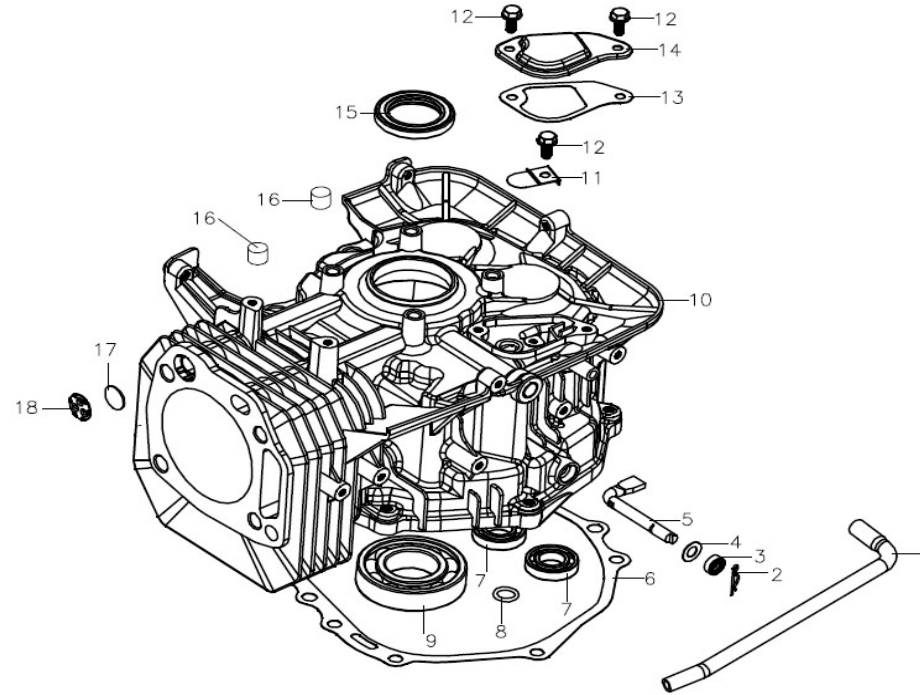
S/N	Parts No.	Description	Qty.	Remark
1	160210017-T360	风扇罩部件 COVER COMP.,FAN	1	

注 (Note)： 表示LC1P88F有1个[ 1 means LC1P88FA has 1 QTY ]



汽缸头 (Cylinder Head)

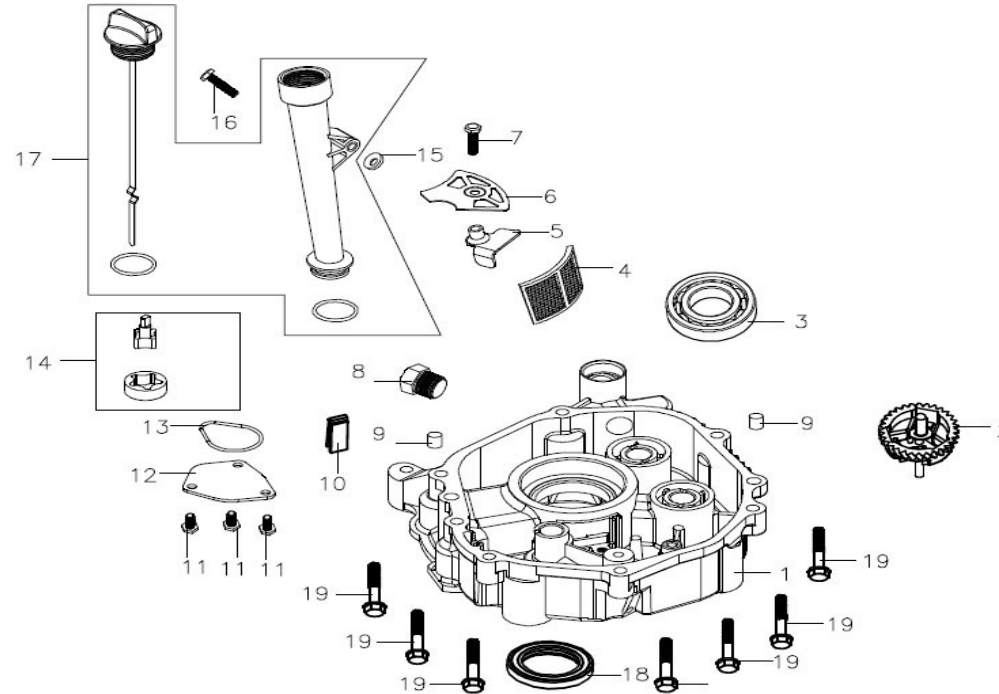
序号 No.	零部件件号 Part No.	零部件名称	Description	数量 (Reqd. QTY.)	
				1P88F	1P90F
1	120080283-T370	汽缸头	HEAD COMP.,CYLINDER	1	1
2	120150093-T360	汽缸头密封垫	GASKET,CYLINDER	1	/
	120150083-T370	汽缸头密封垫	GASKET,CYLINDER	/	1
3	380600116-T110	定位销	PIN,DOWEL	2	2
4	380180088-T370	双头螺栓	BOLT,STUD	2	2
5	180650074-T370	排气口密封垫	GASKET,EX.PIPE	1	1
6	270960028-T370	火花塞	SPARK PLUG	1	1
7	160190014-T370	空气导流罩	SHROUD COMP	1	1
8	380140335-0001	六角头法兰面螺栓	BOLT,CYLINDER HEAD	4	4
9	380140067-0003	六角头法兰面螺栓	BOLT,FLANGE,6×12	1	1
10	120250028-T381	汽缸头盖密封垫	PACKING, HEAD COVER	1	1
11	120230045-T370	汽缸头盖	COVER COMP,HEAD	1	1
12	380020070-T370	六角头轴肩螺栓	BOLT,HEXAGONAL, 6×16.5-8×3	4	4



箱体 (Crankcase)

序号 No.	零部件件号 Part No.	零部件名称	Description	数量 (Reqd. QTY.)	
				1P88F	1P90F
1	380740469-T360	通气管	TUBE,BREATHER	1	/
	380740462-T370	通气管	TUBE,BREATHER	/	1
2	381350004-T040	销夹	PIN,LOCK	1	1
3	380650339-T110	油封 $\phi 8 \times \phi 14 \times 4$	OIL SEAL	1	1
4	380450559-T370	平垫 $8 \times 16 \times 0.5$	WASHER	1	1
5	171630008-T370	调速臂	SHAFT,GOVERNOR ARM	1	1
6	110830033-T370	曲轴箱盖密封垫	PACKING,CASE COVER	1	1
7	380630026-0001	深沟球轴承16003	EDDP GROOVE BALL BEAEING	2	2
8	380840443-T370	密封圈 $12 \times 2.5$	O-RING $12 \times 2.5$	1	1
9	380630141-0001	轴承6207	BEARING	1	1
10	110810043-T360	曲轴箱体	CRANK CASE COMP	1	/
	110810026-T370	曲轴箱体	CRANK CASE COMP	/	1
11	140250006-T370	簧片阀	VALVE,,BREATHER	1	1
12	380140067-0003	六角头法兰面螺栓 $M6 \times 12$	BOLT,FLANGE $M6 \times 12$	3	3

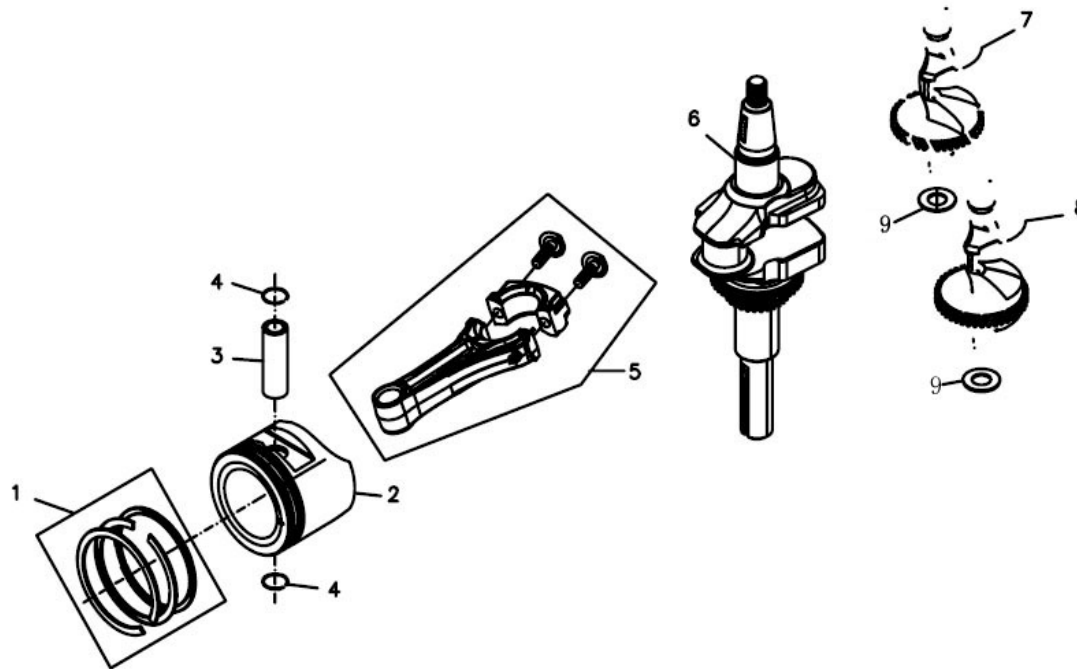




曲轴箱盖 (Crankcase Cover)

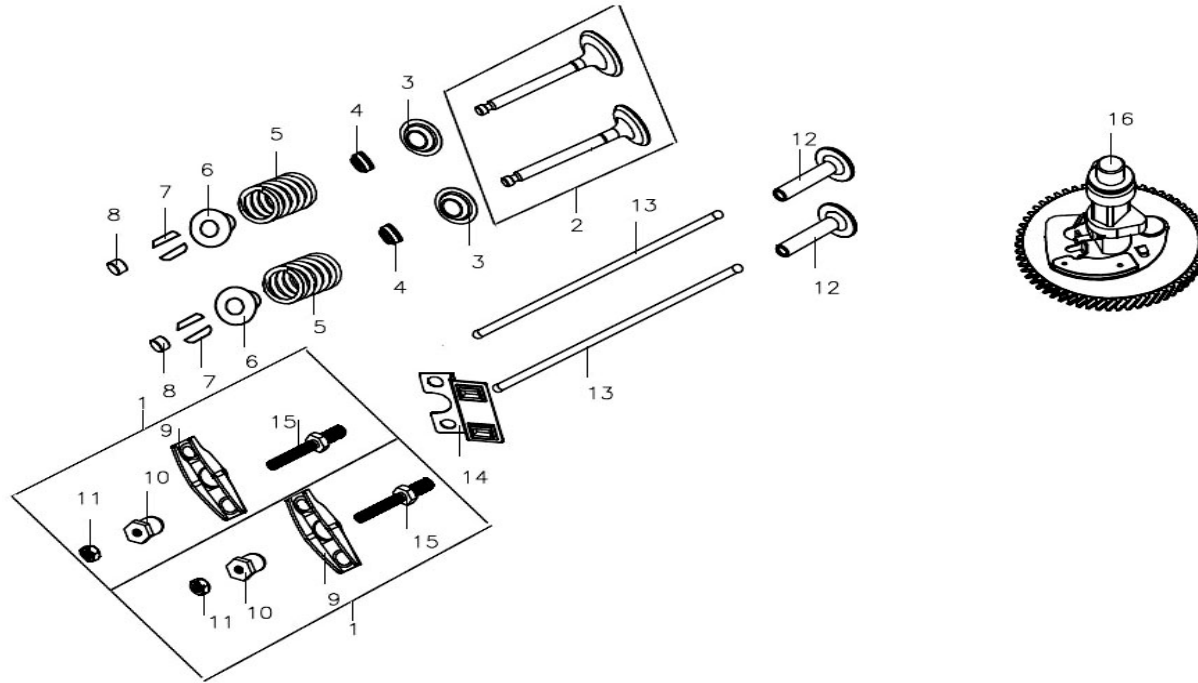
序号 No.	零部件件号 Part No.	零部件名称	Description	数量 (Reqd. QTY.)	
				1P88F	1P90F
1	110820021-T370	曲轴箱盖	CASE COVER	1	1
2	171750004-T110	调速齿轮部件	GOVERNOR KIT	1	1
3	380630141-0002	深沟球轴承6207	BEARING	1	1
4	150290012-T370	机油滤网	OIL STRAINER	1	1
5	120530002-T370	油道压板	OIL BAFFLE PLATE	1	1
6	150340008-T370	机油滤网盖	COVER,OIL STRAINER	1	1
7	380140103-0004	六角头法兰面螺栓 M6×25	BOLT,FLANGE M6×25	1	1
8	110260026-T370	密封螺塞	BOLT,DRAIN PLUG	1	1
9	380600123-T370	定位销φ 10×12	PIN,DOWEL φ 10×12	2	2
10	150570003-T370	机油回油块	RUBBER,OIL DEFLECTOR	1	1
11	380140013-0005	六角头法兰面螺栓 M6×16	BOLT,FLANGE M6×16	3	3
12	150040019-T370	油泵盖	OIL PUMP COVER	1	1
13	380840467-T370	密封圈	SEAL RING,OLL PUMP	1	1





曲轴 (Crankshaft)

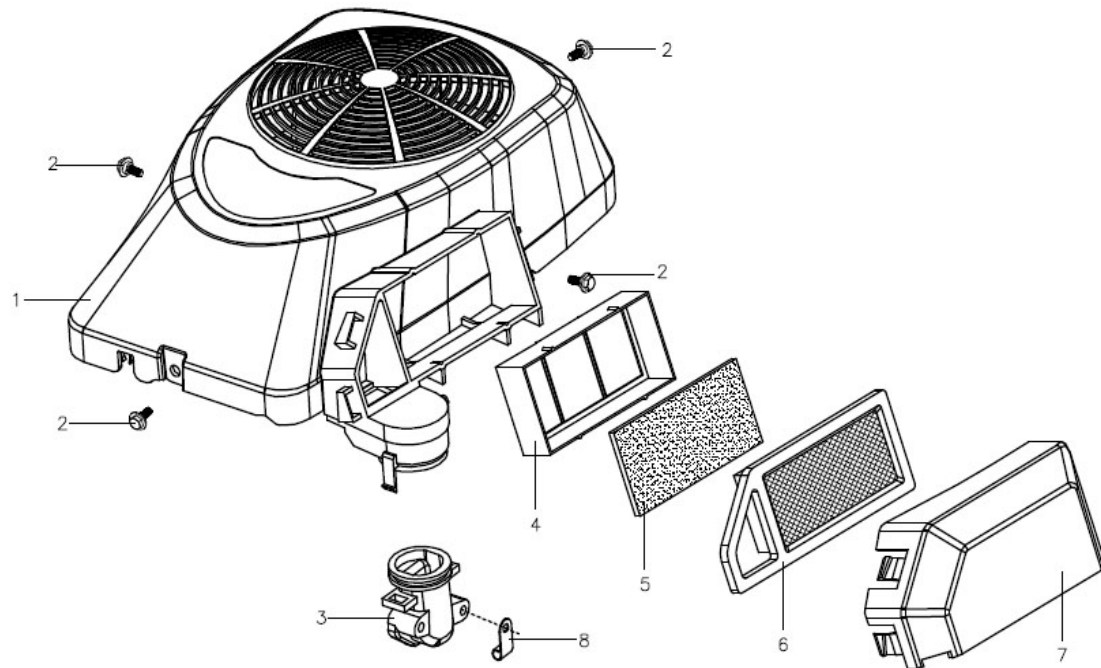
序号 No.	零部件件号 Part No.	零部件名称	Description	数量 (Reqd. QTY.)	
				1P88F	1P90F
1	130070083-T110	活塞环组合	RING SET,PISTON	1	/
	130070088-T370	活塞环组合	RING SET,PISTON	/	1
2	130030122-T360	活塞	PISTON	1	/
	130030094-T370	活塞	PISTON	/	1
3	130060034-T110	活塞销	PIN,PISTON	1	1
4	380560057-T110	钢丝挡圈	CLIP PISTON PIN	2	2
5	130150048-T370	连杆	CONN ROD ASSY	1	1
6	130290102-T370	曲轴部件	CRANKSHAFT COMP	1	1
7	130450010-T370	平衡轴A	WEIGHT,BALANCER	1	1
8	130450011-T370	平衡轴B	WEIGHT,BALANCER	1	1
9	380450560-T370	平垫圈17.2×30×1.5	FLAT WASHER	2	2



配气机构 (Valve)

序号 No.	零部件件号 Part No.	零部件名称	Description	数量 (Reqd. QTY.)	
				1P88F	1P90F
1	140450023-T110	气门摇臂组合	ARM,VALVE ROCKER	2	2
2	500550036-T370	气门套件	VALVE ASSY.	1	1
3	140360010-T110	气门内弹簧座圈	SEAT,VALVE SPRING	2	2
4	140400012-T110	挡油罩	SEAL,VALVE STEM	2	2
5	140340025-T11D	气门内弹簧	SPRING,VALVE	2	2
6	140380021-T11D	气门弹簧座	RETAINER,VALVE SPRING	2	2
7	140390015-T11D	气门锁夹	VALVE KEEPER	4	4
8	140320002-T110	气门调整帽	ROTATOR,VALVE	2	2
9	140460024-T110	气门摇臂	ROCKER ARM	2	2
10	140490012-T040	气门调节螺母	PIVOT ROCKER ARM	2	2
11	140470001-T040	气门锁紧螺母	NUT,PIVOT ADJUSTING	2	2
12	140690004-T110	挺柱	LIFTER VALVE	2	2
13	140670011-T370	挺杆组合	ROD,PUSH	2	2

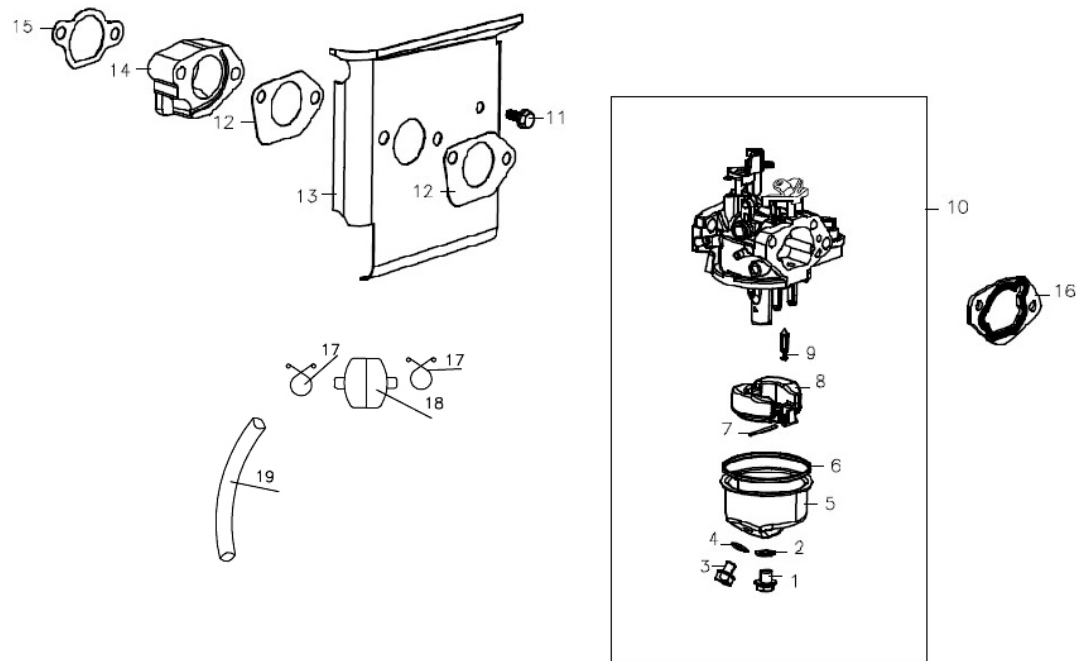




### 1P88F挡风罩 (Blower Housing)

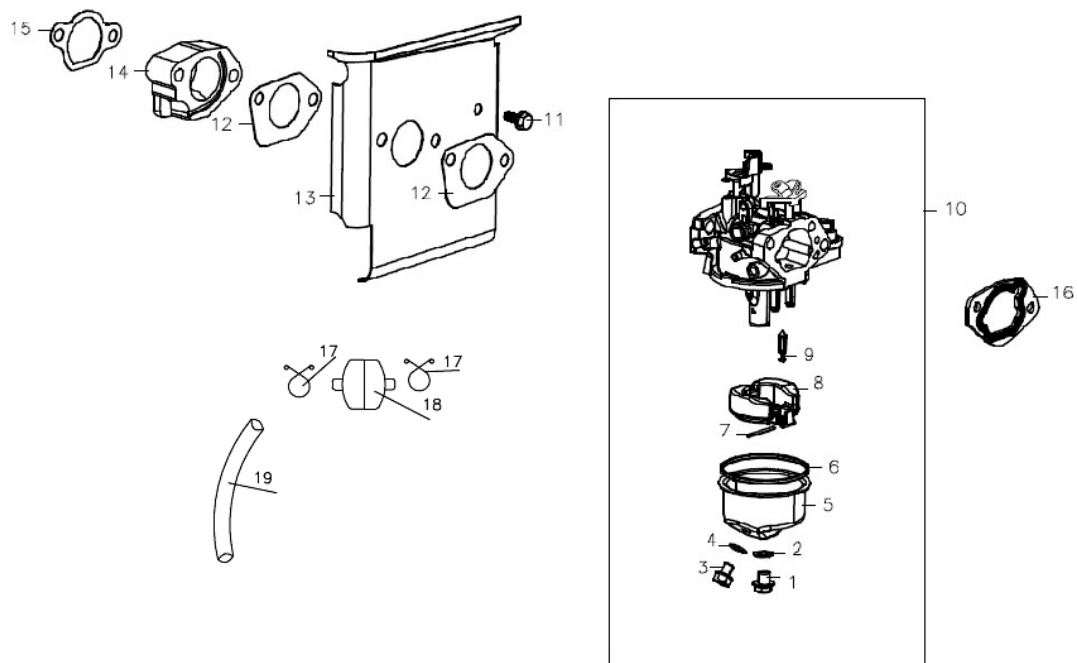
序号 No.	零部件件号 Part No.	零部件名称	Description	数量 (Reqd. QTY.)	
				1P88F	1P90F
1	160210017-T360	风扇罩部件	COVER COMP.,FAN	1	/
2	380020070-T370	六角轴肩螺栓	BOLT,HEXAGONAL	4	/
3	180180099-T360	空滤器连接管	ELBOW COMP.,AIR CLEANER	1	/
4	181280006-T360	滤芯上盖	COVER,GASKET	1	/
5	180130119-T360	空滤器滤芯 (粗滤海绵)	FILTER,OUTER	1	/
6	180130165-T360	空滤器滤芯 (滤芯体)	ELEMENT,LEFT	1	/
7	180320005-T360	空滤器壳体密封盖	COVER,AIR CLEANER	1	/
8	380950186-T370	管夹	CLIP,OVERFALL PIPE	1	/





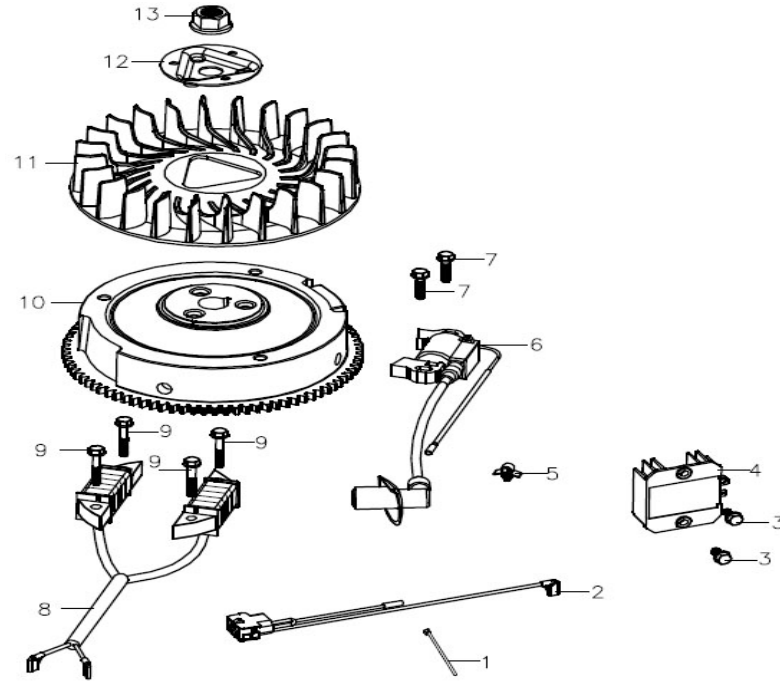
### 化油器 (Carburetor)

序号 No.	零部件件号 Part No.	零部件名称	Description	数量 (Reqd. QTY.)	
				1P88F	1P90F
1	380140353-T040	六角头法兰面螺栓	BOLT,OLL CUP	1	1
2	380450539-T040	平垫圈	WASHER,OIL CUP BOLT	1	1
3	172930001-T040	油杯放油螺塞	DRAIN PLUG,OLL CUP	1	1
4	380450577-T040	平垫圈	GASKET,OLL CUP	1	1
5	170250022-T110	浮子室	OIL CUP	1	1
6	380840456-T110	密封圈	GASKET,OIL CUP	1	1
7	170290016-T110	浮子销	PIN , FLOAT	1	1
8	170280020-T110	浮子	FLOAT	1	1
9	170180025-T110	针阀	VALVE , FLOAT	1	1
10	170020650-T360	化油器	CARBURETOR ASSY	1	/
	170020652-T370	化油器	CARBURETOR ASSY	/	1
11	380140067-0003	六角头法兰面螺栓	BOLT,FLANGE,6*12	1	1
12	170430099-T370	化油器密封垫	PACKING.,CARBURETOR	2	2



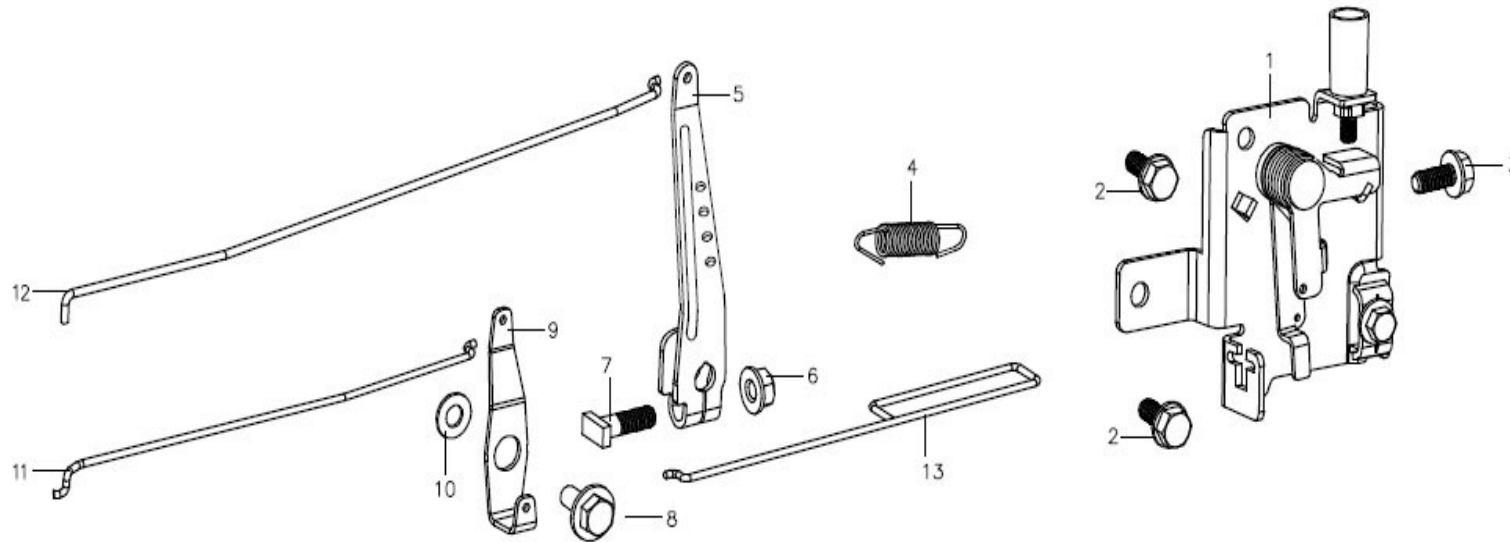
### 化油器 (Carburetor)

序号 No.	零部件件号 Part No.	零部件名称	Description	数量 (Reqd. QTY.)	
				1P88F	1P90F
13	160190013-T370	空气导流罩	SHROUD COMP	1	1
14	170440053-T370	化油器隔热垫	INSULATOR,CARBURETOR	1	1
15	170430101-T370	化油器密封垫	PACKING.,CARBURETOR	1	1
16	170430100-T370	化油器密封垫	PACKING.,CARBURETOR	1	1
17	380950193-T370	管夹	CLIP, TUBE	2	2
18	170010018-T370	燃油滤清器	STRAINER,FUEL	1	1
19	380750335-T370	油管	TUBE,FUEL	1	1



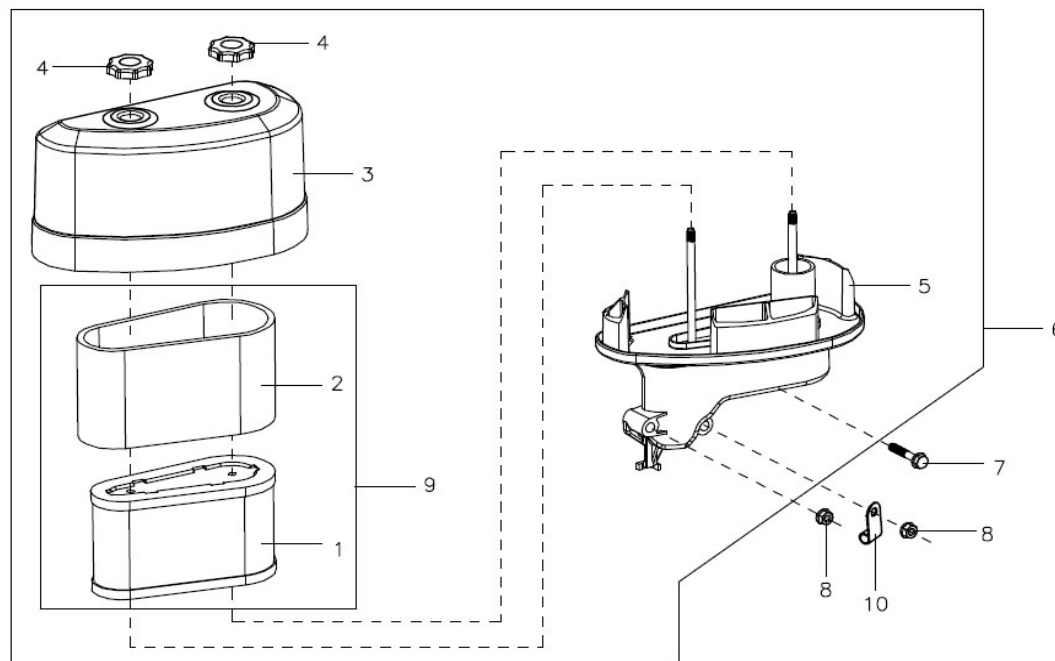
飞轮 (Flywheel)

序号 No.	零部件件号 Part No.	零部件名称	Description	数量 (Reqd. QTY.)	
				1P88F	1P90F
1	380900062-T561	箍带	TIE,CABLE	1	1
2	271280013-T370	连接线	OUTPUT WIRE,RECTIFIER	1	1
3	380140209-0001	六角法头兰面螺栓M6×14	BOLT,FLANGE M6×14	2	2
4	270880115-T370	调压整流器	RECTIFIER	1	1
5	380930027-T560	定位线卡	CLIP,WIRE HARNESS	1	1
6	270920251-T370	点火线圈	COIL ASSY.,IGNITION	1	1
7	380140103-0004	六角头法兰面螺栓M6×25	BOLT,FLANGE M6×25	2	2
8	270190004-T370	充电线圈部件	COIL ASSY.,CHARGE	1	1
9	380140054-0003	六角法兰面螺栓M6×30	BOLT,FLANGE M6×30	4	4
10	270020093-T370	磁电机转子部件 (飞轮)	FLYWHEEL COMP	1	1
11	160180009-T110	叶轮	FAN,COOLING	1	1
12	193590013-T370	起动盘	PULLEY,STARTER	1	1
13	380370050-T110	六角法兰面螺母	NUT,SPECIAL	1	1



调速机构 (Governor)

序号 No.	零部件件号 Part No.	零部件名称	Description	数量 (Reqd. QTY.)	
				1P88F	1P90F
1	171680036-T370	油门操纵手柄组合	CONTROL ASSY.	1	1
2	380140209-0001	六角头法兰面螺栓 M6×14	BOLT,FLANGE,M6×14	2	2
3	380140013-0005	六角头法兰面螺栓 M6×16	BOLT,FLANGE,M6×16	1	1
4	171600020-T370	调速弹簧	SPRING,GOVERNOR	1	1
5	171620013-T370	调速支架	ARM,GOVERNOR	1	1
6	380370066-0001	六角法兰面螺母 M6	NUT,FLANGE, M6	1	1
7	380250002-T040	方头平端紧定螺钉	BOLT,GOVERNOR ARM	1	1
8	380020071-T370	六角头轴肩螺栓	BOLT,HEXAGONAL	1	1
9	171480013-T370	阻风门支架	STAY COMP.,CHOKE	1	1
10	380450531-T040	平垫圈6×13×1	FLAT WASHER, 6×13×1	1	1
11	171490002-T370	阻风门杆	ROD,CHOKE	1	1
12	171590013-T370	油门拉杆	ROD,GOVERNOR	1	1
13	171650003-T370	阻风门拉杆	ROD,THROTTLE	1	1



空滤器 (Air Cleaner)

序号 No.	零部件件号 Part No.	零部件名称	Description	数量 (Reqd. QTY.)	
				1P88F	1P90F
1	180130163-T370	空滤器滤芯 (滤芯体)	ELEMENT, AIR CLEANER	/	1
2	180130164-T370	空滤器滤芯 (粗滤海绵)	ELEMENT, AIR CLEANER	/	1
3	180070092-T370	空滤器壳体盖	COVER, AIR CLEANER	/	1
4	181950002-T370	螺栓手柄	HANDLE, AIR CLEANER BOLT	/	2
5	180280007-T370	空滤器座	ELBOW COMP., AIR CLEANER	/	1
6	180020452-T370	空滤器	AIR CLEANER ASSY	/	1
7	380140100-0003	六角头法兰面螺栓M6×35	BOLT, FLANGE 6×35	/	1
8	380370066-0001	六角法兰面螺母 M6	NUT, FLANGE	/	2
9	180100056-T370	空滤器滤芯组合	ELEMENT ASSY., AIR CLEANER	/	1
10	380950186-T370	管夹	CLIP, OVERFALL PIPE	/	1





隆鑫通用动力股份有限公司

Loncin motor co., Ltd.

详细地址：重庆市九龙坡区九龙工业园区华龙大道99号

Add:No.99Hualong Road,Jiulongpo District,Chongqing,China

Tel:86 23 8980 5678/86 23 8980 8505

Fax:86 23 8906 7566

Email:service@loncinengine.com

Website:www.loncinengine.com

**PRINTED IN CHINA**